



SZABO SCANDIC

Part of Europa Biosite

Produktinformation



Forschungsprodukte & Biochemikalien



Zellkultur & Verbrauchsmaterial



Diagnostik & molekulare Diagnostik



Laborgeräte & Service

Weitere Information auf den folgenden Seiten!
See the following pages for more information!



Lieferung & Zahlungsart

siehe unsere [Liefer- und Versandbedingungen](#)

Zuschläge

- Mindermengenzuschlag
- Trockeneiszuschlag
- Gefahrgutzuschlag
- Expressversand

SZABO-SCANDIC HandelsgmbH

Quellenstraße 110, A-1100 Wien

T. +43(0)1 489 3961-0

F. +43(0)1 489 3961-7

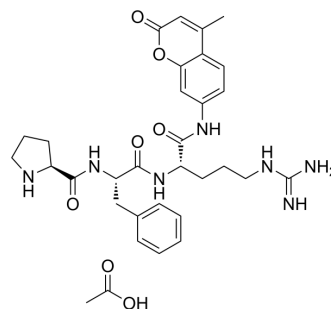
mail@szabo-scandic.com

www.szabo-scandic.com

[linkedin.com/company/szaboscandic](https://www.linkedin.com/company/szaboscandic) 

Pro-Phe-Arg-AMC acetate

| | |
|---------------------------|---|
| Cat. No.: | HY-P2618 |
| CAS No.: | 2237216-30-5 |
| Molecular Formula: | C ₃₂ H ₄₁ N ₇ O ₇ |
| Molecular Weight: | 635.71 |
| Target: | Others |
| Pathway: | Others |
| Storage: | Sealed storage, away from moisture |
| | Powder -80°C 2 years |
| | -20°C 1 year |



* In solvent : -80°C, 6 months; -20°C, 1 month (sealed storage, away from moisture)

SOLVENT & SOLUBILITY

In Vitro

DMSO : 100 mg/mL (157.30 mM; Need ultrasonic)

| Concentration | Mass | | |
|---------------|-----------|-----------|------------|
| | 1 mg | 5 mg | 10 mg |
| 1 mM | 1.5730 mL | 7.8652 mL | 15.7304 mL |
| 5 mM | 0.3146 mL | 1.5730 mL | 3.1461 mL |
| 10 mM | 0.1573 mL | 0.7865 mL | 1.5730 mL |

Please refer to the solubility information to select the appropriate solvent.

BIOLOGICAL ACTIVITY

Description

Pro-Phe-Arg-AMC acetate is a peptide that can be used as the substrate of human glandular kallikrein 2 (hK2)^[1].

REFERENCES

[1]. Lövgren J, et al. Enzymatic action of human glandular kallikrein 2 (hK2). Substrate specificity and regulation by Zn²⁺ and extracellular protease inhibitors. Eur J Biochem. 1999 Jun;262(3):781-9.

Caution: Product has not been fully validated for medical applications. For research use only.

Tel: 609-228-6898

Fax: 609-228-5909

E-mail: tech@MedChemExpress.com

Address: 1 Deer Park Dr, Suite Q, Monmouth Junction, NJ 08852, USA