



SZABO SCANDIC

Part of Europa Biosite

Produktinformation



Forschungsprodukte & Biochemikalien



Zellkultur & Verbrauchsmaterial



Diagnostik & molekulare Diagnostik



Laborgeräte & Service

Weitere Information auf den folgenden Seiten!
See the following pages for more information!



Lieferung & Zahlungsart

siehe unsere [Liefer- und Versandbedingungen](#)

Zuschläge

- Mindermengenzuschlag
- Trockeneiszuschlag
- Gefahrgutzuschlag
- Expressversand

SZABO-SCANDIC HandelsgmbH

Quellenstraße 110, A-1100 Wien

T. +43(0)1 489 3961-0

F. +43(0)1 489 3961-7

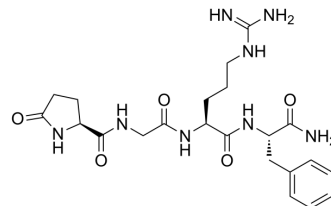
mail@szabo-scandic.com

www.szabo-scandic.com

[linkedin.com/company/szaboscandic](https://www.linkedin.com/company/szaboscandic) 

Antho-RFamide

Cat. No.:	HY-P2655
CAS No.:	107535-01-3
Molecular Formula:	C ₂₂ H ₃₂ N ₈ O ₅
Molecular Weight:	488.54
Sequence:	{Pyr}-Gly-Arg-Phe-NH ₂
Sequence Shortening:	{Pyr}-GRF-NH ₂
Target:	Others
Pathway:	Others
Storage:	Please store the product under the recommended conditions in the Certificate of Analysis.



BIOLOGICAL ACTIVITY

Description

Antho-RFamide is a neuropeptide isolated from the sea anemone (*Anthopleura elegantissima*). Antho-RFamide contains a specific carboxyl-terminal sequence, Arg-Phe-NH₂, that plays an important role in neural signaling. Antho-RFamide can be used to study the function of neuropeptides in the nervous system of the simplest animals^[1].

REFERENCES

[1]. Grimmelikhuijzen C J, et al. Isolation of pyroGlu-Gly-Arg-Phe-NH₂ (Antho-RFamide), a neuropeptide from sea anemones[J]. Proceedings of the national Academy of Sciences, 1986, 83(24): 9817-9821.

Caution: Product has not been fully validated for medical applications. For research use only.

Tel: 609-228-6898

Fax: 609-228-5909

E-mail: tech@MedChemExpress.com

Address: 1 Deer Park Dr, Suite Q, Monmouth Junction, NJ 08852, USA