



SZABO SCANDIC

Part of Europa Biosite

Produktinformation



Forschungsprodukte & Biochemikalien



Zellkultur & Verbrauchsmaterial



Diagnostik & molekulare Diagnostik



Laborgeräte & Service

Weitere Information auf den folgenden Seiten!
See the following pages for more information!



Lieferung & Zahlungsart

siehe unsere [Liefer- und Versandbedingungen](#)

Zuschläge

- Mindermengenzuschlag
- Trockeneiszuschlag
- Gefahrgutzuschlag
- Expressversand

SZABO-SCANDIC HandelsgmbH

Quellenstraße 110, A-1100 Wien

T. +43(0)1 489 3961-0

F. +43(0)1 489 3961-7

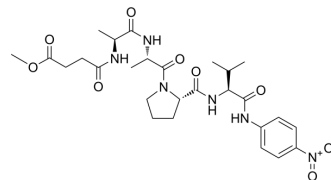
mail@szabo-scandic.com

www.szabo-scandic.com

[linkedin.com/company/szaboscandic](https://www.linkedin.com/company/szaboscandic) 

MeOSuc-Ala-Ala-Pro-Val-pNA

Cat. No.:	HY-P2685
CAS No.:	70967-90-7
Molecular Formula:	C ₂₇ H ₃₈ N ₆ O ₉
Molecular Weight:	590.63
Target:	Fluorescent Dye
Pathway:	Others
Storage:	Sealed storage, away from moisture and light Powder -80°C 2 years -20°C 1 year * In solvent : -80°C, 6 months; -20°C, 1 month (sealed storage, away from moisture and light)



SOLVENT & SOLUBILITY

In Vitro

DMSO : 100 mg/mL (169.31 mM; Need ultrasonic)

Concentration	Mass		
	1 mg	5 mg	10 mg
1 mM	1.6931 mL	8.4655 mL	16.9311 mL
5 mM	0.3386 mL	1.6931 mL	3.3862 mL
10 mM	0.1693 mL	0.8466 mL	1.6931 mL

Please refer to the solubility information to select the appropriate solvent.

BIOLOGICAL ACTIVITY

Description

MeOSuc-Ala-Ala-Pro-Val-pNA is a sensitive fluorogenic substrate of human leukocyte and porcine pancreatic elastase^[1].

In Vitro

MeOSuc-Ala-Ala-Pro-Val-pNA exhibits k_c/K_m values of 185,000, 15,000, 58,000 and 330,000 M⁻¹s⁻¹ at 0.10 M phosphate, 0.20 M Mes, 0.10 M phosphate and 0.04 M phosphate, respectively, for reactions of human leukocyte elastase^[2].
 MCE has not independently confirmed the accuracy of these methods. They are for reference only.

REFERENCES

[1]. Castillo MJ, et al. Sensitive substrates for human leukocyte and porcine pancreatic elastase: a study of the merits of various chromophoric and fluorogenic leaving groups in assays for serine proteases. *Anal Biochem.* 1979 Oct 15;99(1):53-64.

[2]. Ross L. Stein, et al. Catalysis by human leukocyte elastase. Rate-limiting deacylation for specific p-nitroanilides and amides. *J. Am. Chem. Soc.* 1984, 106, 3, 796-798.

Caution: Product has not been fully validated for medical applications. For research use only.

Tel: 609-228-6898

Fax: 609-228-5909

E-mail: tech@MedChemExpress.com

Address: 1 Deer Park Dr, Suite Q, Monmouth Junction, NJ 08852, USA