



SZABO SCANDIC

Part of Europa Biosite

Produktinformation



Forschungsprodukte & Biochemikalien



Zellkultur & Verbrauchsmaterial



Diagnostik & molekulare Diagnostik



Laborgeräte & Service

Weitere Information auf den folgenden Seiten!
See the following pages for more information!



Lieferung & Zahlungsart

siehe unsere [Liefer- und Versandbedingungen](#)

Zuschläge

- Mindermengenzuschlag
- Trockeneiszuschlag
- Gefahrgutzuschlag
- Expressversand

SZABO-SCANDIC HandelsgmbH

Quellenstraße 110, A-1100 Wien

T. +43(0)1 489 3961-0

F. +43(0)1 489 3961-7

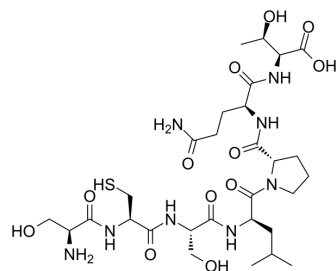
mail@szabo-scandic.com

www.szabo-scandic.com

[linkedin.com/company/szaboscandic](https://www.linkedin.com/company/szaboscandic) 

[D-Leu-4]-OB3

Cat. No.:	HY-P3342
CAS No.:	289056-32-2
Molecular Formula:	C ₂₉ H ₅₀ N ₈ O ₁₂ S
Molecular Weight:	734.82
Sequence:	Ser-Cys-Ser-[D-Leu]-Pro-Gln-Thr
Sequence Shortening:	SCS-[D-Leu]-PQT
Target:	PD-1/PD-L1; Apoptosis
Pathway:	Immunology/Inflammation; Apoptosis
Storage:	Sealed storage, away from moisture
	Powder -80°C 2 years
	-20°C 1 year



* In solvent : -80°C, 6 months; -20°C, 1 month (sealed storage, away from moisture)

SOLVENT & SOLUBILITY

In Vitro

DMSO : 50 mg/mL (68.04 mM; Need ultrasonic)

Preparing Stock Solutions	Solvent Concentration	Mass		
		1 mg	5 mg	10 mg
	1 mM	1.3609 mL	6.8044 mL	13.6088 mL
	5 mM	0.2722 mL	1.3609 mL	2.7218 mL
	10 mM	0.1361 mL	0.6804 mL	1.3609 mL

Please refer to the solubility information to select the appropriate solvent.

BIOLOGICAL ACTIVITY

Description

[D-Leu-4]-OB3 inhibits expressions of pro-inflammatory, proliferative and metastatic genes and PD-L1 expression. [D-Leu-4]-OB3 stimulates expression of pro-apoptotic genes^[1].

REFERENCES

[1]. Yih Ho, et al. Leptin-derived peptides block leptin-induced proliferation by reducing expression of pro-inflammatory genes in hepatocellular carcinoma cells. Food Chem Toxicol. 2019 Nov;133:110808.

Caution: Product has not been fully validated for medical applications. For research use only.

Tel: 609-228-6898

Fax: 609-228-5909

E-mail: tech@MedChemExpress.com

Address: 1 Deer Park Dr, Suite Q, Monmouth Junction, NJ 08852, USA