



SZABO SCANDIC

Part of Europa Biosite

Produktinformation



Forschungsprodukte & Biochemikalien



Zellkultur & Verbrauchsmaterial



Diagnostik & molekulare Diagnostik



Laborgeräte & Service

Weitere Information auf den folgenden Seiten!
See the following pages for more information!



Lieferung & Zahlungsart

siehe unsere [Liefer- und Versandbedingungen](#)

Zuschläge

- Mindermengenzuschlag
- Trockeneiszuschlag
- Gefahrgutzuschlag
- Expressversand

SZABO-SCANDIC HandelsgmbH

Quellenstraße 110, A-1100 Wien

T. +43(0)1 489 3961-0

F. +43(0)1 489 3961-7

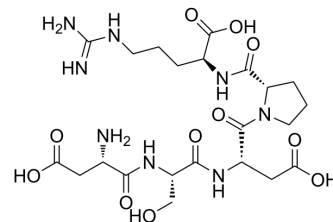
mail@szabo-scandic.com

www.szabo-scandic.com

[linkedin.com/company/szaboscandic](https://www.linkedin.com/company/szaboscandic) 

Pentigetide

Cat. No.:	HY-P3746
CAS No.:	62087-72-3
Molecular Formula:	C ₂₂ H ₃₆ N ₈ O ₁₁
Molecular Weight:	588.57
Sequence Shortening:	DSDPR
Target:	Others
Pathway:	Others
Storage:	Sealed storage, away from moisture
	Powder -80°C 2 years
	-20°C 1 year



* In solvent : -80°C, 6 months; -20°C, 1 month (sealed storage, away from moisture)

SOLVENT & SOLUBILITY

In Vitro

DMSO : 50 mg/mL (84.95 mM; Need ultrasonic)

Concentration	Solvent	Mass	1 mg	5 mg	10 mg
			1 mg	5 mg	10 mg
Preparing Stock Solutions	1 mM		1.6990 mL	8.4952 mL	16.9903 mL
	5 mM		0.3398 mL	1.6990 mL	3.3981 mL
	10 mM		0.1699 mL	0.8495 mL	1.6990 mL

Please refer to the solubility information to select the appropriate solvent.

BIOLOGICAL ACTIVITY

Description

Pentigetide is a synthesis peptide (Asp-Ser-Asp-Pro-Arg or D-S-D-P-R), also known as "HEPP" for "Human IgE Pentapeptide". Pentigetide can not produce IgE inhibition in several different systems, due to the aspartic acids in HEPP changed into an asparagine^[1].

REFERENCES

[1]. Hamburger R N. Recent Studies with Human IgE Pentapeptide (HEPP)[M]//New Trends in Allergy. Springer, Berlin, Heidelberg, 1981: 311-319.

Caution: Product has not been fully validated for medical applications. For research use only.

Tel: 609-228-6898

Fax: 609-228-5909

E-mail: tech@MedChemExpress.com

Address: 1 Deer Park Dr, Suite Q, Monmouth Junction, NJ 08852, USA