



SZABO SCANDIC

Part of Europa Biosite

Produktinformation



Forschungsprodukte & Biochemikalien



Zellkultur & Verbrauchsmaterial



Diagnostik & molekulare Diagnostik



Laborgeräte & Service

Weitere Information auf den folgenden Seiten!
See the following pages for more information!



Lieferung & Zahlungsart

siehe unsere [Liefer- und Versandbedingungen](#)

Zuschläge

- Mindermengenzuschlag
- Trockeneiszuschlag
- Gefahrgutzuschlag
- Expressversand

SZABO-SCANDIC HandelsgmbH

Quellenstraße 110, A-1100 Wien

T. +43(0)1 489 3961-0

F. +43(0)1 489 3961-7

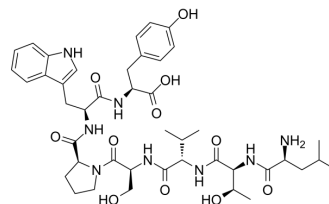
mail@szabo-scandic.com

www.szabo-scandic.com

[linkedin.com/company/szaboscandic](https://www.linkedin.com/company/szaboscandic) 

ErbB-2-binding peptide

Cat. No.:	HY-P4082
CAS No.:	562791-56-4
Molecular Formula:	C ₄₃ H ₆₀ N ₈ O ₁₁
Molecular Weight:	864.98
Sequence:	Leu-Thr-Val-Ser-Pro-Trp-Tyr
Sequence Shortening:	LTVSPWY
Target:	EGFR
Pathway:	JAK/STAT Signaling; Protein Tyrosine Kinase/RTK
Storage:	Sealed storage, away from moisture



Powder -80°C 2 years
-20°C 1 year

* In solvent : -80°C, 6 months; -20°C, 1 month (sealed storage, away from moisture)

SOLVENT & SOLUBILITY

In Vitro

DMSO : 100 mg/mL (115.61 mM; Need ultrasonic)

Preparing Stock Solutions	Solvent Concentration	Mass		
		1 mg	5 mg	10 mg
	1 mM	1.1561 mL	5.7805 mL	11.5610 mL
	5 mM	0.2312 mL	1.1561 mL	2.3122 mL
	10 mM	0.1156 mL	0.5780 mL	1.1561 mL

Please refer to the solubility information to select the appropriate solvent.

BIOLOGICAL ACTIVITY

Description

ErbB-2-binding peptide (HER2-binding peptide) is a tumor-binding peptide. ErbB-2-binding peptide has the potential for cancer research^[1].

REFERENCES

[1]. Wanaporn Yimchuen, et al. Strategic design to create HER2-targeting proteins with target-binding peptides immobilized on a fibronectin type III domain scaffold. RSC Adv. 2020 Apr 17;10(26):15154-15162.

Caution: Product has not been fully validated for medical applications. For research use only.

Tel: 609-228-6898

Fax: 609-228-5909

E-mail: tech@MedChemExpress.com

Address: 1 Deer Park Dr, Suite Q, Monmouth Junction, NJ 08852, USA