



SZABO SCANDIC

Part of Europa Biosite

Produktinformation



Forschungsprodukte & Biochemikalien



Zellkultur & Verbrauchsmaterial



Diagnostik & molekulare Diagnostik



Laborgeräte & Service

Weitere Information auf den folgenden Seiten!
See the following pages for more information!



Lieferung & Zahlungsart

siehe unsere [Liefer- und Versandbedingungen](#)

Zuschläge

- Mindermengenzuschlag
- Trockeneiszuschlag
- Gefahrgutzuschlag
- Expressversand

SZABO-SCANDIC HandelsgmbH

Quellenstraße 110, A-1100 Wien

T. +43(0)1 489 3961-0

F. +43(0)1 489 3961-7

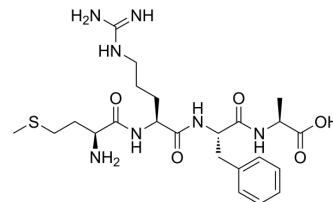
mail@szabo-scandic.com

www.szabo-scandic.com

[linkedin.com/company/szaboscandic](https://www.linkedin.com/company/szaboscandic) 

Met-Arg-Phe-Ala

Cat. No.:	HY-P4270
CAS No.:	67368-29-0
Molecular Formula:	C ₂₃ H ₃₇ N ₇ O ₅ S
Molecular Weight:	523.65
Sequence:	Met-Arg-Phe-Ala
Sequence Shortening:	MRFA
Target:	Others
Pathway:	Others
Storage:	Sealed storage, away from moisture and light
	Powder -80°C 2 years
	-20°C 1 year



* In solvent : -80°C, 6 months; -20°C, 1 month (sealed storage, away from moisture and light)

SOLVENT & SOLUBILITY

In Vitro

DMSO : ≥ 100 mg/mL (190.97 mM)
 * "≥" means soluble, but saturation unknown.

	Solvent Concentration	Mass		
		1 mg	5 mg	10 mg
Preparing Stock Solutions	1 mM	1.9097 mL	9.5484 mL	19.0967 mL
	5 mM	0.3819 mL	1.9097 mL	3.8193 mL
	10 mM	0.1910 mL	0.9548 mL	1.9097 mL

Please refer to the solubility information to select the appropriate solvent.

BIOLOGICAL ACTIVITY

Description

Met-Arg-Phe-Ala is a peptide. Met-Arg-Phe-Ala also is a potent competitive inhibitor for enkephalin-generating endopeptidase (EGE). Met-Arg-Phe-Ala can be used for the research of neurological disease^[1].

REFERENCES

[1]. Knight M, et al. Brain endopeptidase generates enkephalin from striatal precursors. *Peptides*. 1982 May-Jun;3(3):461-8.

Caution: Product has not been fully validated for medical applications. For research use only.

Tel: 609-228-6898

Fax: 609-228-5909

E-mail: tech@MedChemExpress.com

Address: 1 Deer Park Dr, Suite Q, Monmouth Junction, NJ 08852, USA