



SZABO SCANDIC

Part of Europa Biosite

Produktinformation



Forschungsprodukte & Biochemikalien



Zellkultur & Verbrauchsmaterial



Diagnostik & molekulare Diagnostik



Laborgeräte & Service

Weitere Information auf den folgenden Seiten!
See the following pages for more information!



Lieferung & Zahlungsart

siehe unsere [Liefer- und Versandbedingungen](#)

Zuschläge

- Mindermengenzuschlag
- Trockeneiszuschlag
- Gefahrgutzuschlag
- Expressversand

SZABO-SCANDIC HandelsgmbH

Quellenstraße 110, A-1100 Wien

T. +43(0)1 489 3961-0

F. +43(0)1 489 3961-7

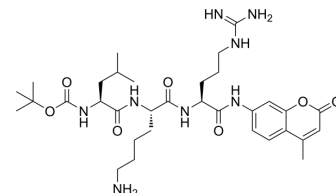
mail@szabo-scandic.com

www.szabo-scandic.com

[linkedin.com/company/szaboscandic](https://www.linkedin.com/company/szaboscandic) 

Boc-Leu-Lys-Arg-AMC

Cat. No.:	HY-P4312
CAS No.:	109358-47-6
Molecular Formula:	C ₃₃ H ₅₂ N ₈ O ₇
Molecular Weight:	672.82
Sequence:	{Boc-Leu}-Lys-{Arg-AMC}
Sequence Shortening:	{Boc-Leu}-K-{Arg-AMC}
Target:	Fluorescent Dye
Pathway:	Others
Storage:	Sealed storage, away from moisture
	Powder -80°C 2 years
	-20°C 1 year



* In solvent : -80°C, 6 months; -20°C, 1 month (sealed storage, away from moisture)

SOLVENT & SOLUBILITY

In Vitro

DMSO : 100 mg/mL (148.63 mM; Need ultrasonic)

Preparing Stock Solutions	Solvent Concentration	Mass		
		1 mg	5 mg	10 mg
	1 mM	1.4863 mL	7.4314 mL	14.8628 mL
	5 mM	0.2973 mL	1.4863 mL	2.9726 mL
	10 mM	0.1486 mL	0.7431 mL	1.4863 mL

Please refer to the solubility information to select the appropriate solvent.

BIOLOGICAL ACTIVITY

Description

Boc-Leu-Lys-Arg-AMC is a fluorogenic substrate for the Kex2 endoprotease^[1].

IC₅₀ & Target

others

REFERENCES

[1]. Jean-Pierre Falguyret, et al. An activity-based probe for the determination of cysteine cathepsin protease activities in whole cells. *Anal Biochem.* 2004 Dec 15;335(2):218-27.

Caution: Product has not been fully validated for medical applications. For research use only.

Tel: 609-228-6898

Fax: 609-228-5909

E-mail: tech@MedChemExpress.com

Address: 1 Deer Park Dr, Suite Q, Monmouth Junction, NJ 08852, USA