



# SZABO SCANDIC

Part of Europa Biosite

## Produktinformation



Forschungsprodukte & Biochemikalien



Zellkultur & Verbrauchsmaterial



Diagnostik & molekulare Diagnostik



Laborgeräte & Service

Weitere Information auf den folgenden Seiten!  
See the following pages for more information!



### Lieferung & Zahlungsart

siehe unsere [Liefer- und Versandbedingungen](#)

### Zuschläge

- Mindermengenzuschlag
- Trockeneiszuschlag
- Gefahrgutzuschlag
- Expressversand

### SZABO-SCANDIC HandelsgmbH

Quellenstraße 110, A-1100 Wien

T. +43(0)1 489 3961-0

F. +43(0)1 489 3961-7

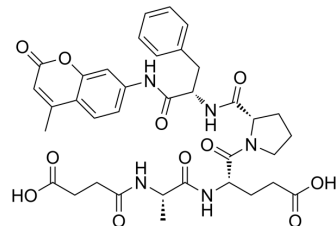
[mail@szabo-scandic.com](mailto:mail@szabo-scandic.com)

[www.szabo-scandic.com](http://www.szabo-scandic.com)

[linkedin.com/company/szaboscandic](https://www.linkedin.com/company/szaboscandic) 

## Suc-AEPF-AMC

Cat. No.:	HY-P4359
CAS No.:	142997-30-6
Molecular Formula:	C <sub>36</sub> H <sub>41</sub> N <sub>5</sub> O <sub>11</sub>
Molecular Weight:	719.74
Sequence:	{Suc}-Ala-Glu-Pro-Phe-{AMC}
Sequence Shortening:	{Suc}-AEPF-{AMC}
Target:	PIN1
Pathway:	PI3K/Akt/mTOR
Storage:	Sealed storage, away from moisture
	Powder    -80°C    2 years
	-20°C    1 year



\* In solvent : -80°C, 6 months; -20°C, 1 month (sealed storage, away from moisture)

### SOLVENT & SOLUBILITY

#### In Vitro

DMSO : 100 mg/mL (138.94 mM; Need ultrasonic)

Preparing Stock Solutions	Solvent Concentration	Mass		
		1 mg	5 mg	10 mg
	1 mM	1.3894 mL	6.9470 mL	13.8939 mL
	5 mM	0.2779 mL	1.3894 mL	2.7788 mL
	10 mM	0.1389 mL	0.6947 mL	1.3894 mL

Please refer to the solubility information to select the appropriate solvent.

### BIOLOGICAL ACTIVITY

#### Description

Suc-AEPF-AMC is a peptide substrate of Pin1 and Par14 peptidyl prolyl isomerase<sup>[1]</sup>.

### REFERENCES

[1]. Uchida T, et, al. Pin1 and Par14 peptidyl prolyl isomerase inhibitors block cell proliferation. Chem Biol. 2003 Jan;10(1):15-24.

---

**Caution: Product has not been fully validated for medical applications. For research use only.**

Tel: 609-228-6898

Fax: 609-228-5909

E-mail: [tech@MedChemExpress.com](mailto:tech@MedChemExpress.com)

Address: 1 Deer Park Dr, Suite Q, Monmouth Junction, NJ 08852, USA