



# SZABO SCANDIC

Part of Europa Biosite

## Produktinformation



Forschungsprodukte & Biochemikalien



Zellkultur & Verbrauchsmaterial



Diagnostik & molekulare Diagnostik



Laborgeräte & Service

Weitere Information auf den folgenden Seiten!  
See the following pages for more information!



### Lieferung & Zahlungsart

siehe unsere [Liefer- und Versandbedingungen](#)

### Zuschläge

- Mindermengenzuschlag
- Trockeneiszuschlag
- Gefahrgutzuschlag
- Expressversand

### SZABO-SCANDIC HandelsgmbH

Quellenstraße 110, A-1100 Wien

T. +43(0)1 489 3961-0

F. +43(0)1 489 3961-7

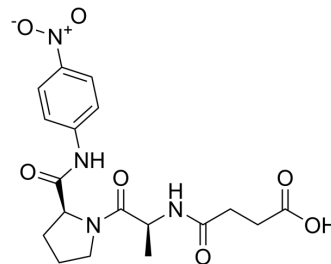
[mail@szabo-scandic.com](mailto:mail@szabo-scandic.com)

[www.szabo-scandic.com](http://www.szabo-scandic.com)

[linkedin.com/company/szaboscandic](https://www.linkedin.com/company/szaboscandic) 

## Suc-Ala-Pro-pNA

Cat. No.:	HY-P4490
CAS No.:	95632-46-5
Molecular Formula:	C <sub>18</sub> H <sub>22</sub> N <sub>4</sub> O <sub>7</sub>
Molecular Weight:	406.39
Sequence:	{Suc-Ala}-{Pro-pNA}
Sequence Shortening:	{Suc-Ala}-{Pro-pNA}
Target:	Prolyl Endopeptidase (PREP)
Pathway:	Metabolic Enzyme/Protease
Storage:	Sealed storage, away from moisture
	Powder    -80°C    2 years
	-20°C    1 year



\* In solvent : -80°C, 6 months; -20°C, 1 month (sealed storage, away from moisture)

### SOLVENT & SOLUBILITY

#### In Vitro

DMSO : 100 mg/mL (246.07 mM; Need ultrasonic)

Preparing Stock Solutions	Concentration	Mass		
		1 mg	5 mg	10 mg
	1 mM	2.4607 mL	12.3035 mL	24.6069 mL
	5 mM	0.4921 mL	2.4607 mL	4.9214 mL
	10 mM	0.2461 mL	1.2303 mL	2.4607 mL

Please refer to the solubility information to select the appropriate solvent.

### BIOLOGICAL ACTIVITY

#### Description

Suc-Ala-Pro-pNA is a peptide that serves as a substrate to detect the activity and stability of prolyl endopeptidase (PEP)<sup>[1]</sup>.

### REFERENCES

[1]. Moreno Amador ML, et al. A new microbial gluten-degrading prolyl endopeptidase: Potential application in celiac disease to reduce gluten immunogenic peptides. PLoS One. 2019 Jun 27;14(6):e0218346.

---

**Caution: Product has not been fully validated for medical applications. For research use only.**

Tel: 609-228-6898

Fax: 609-228-5909

E-mail: [tech@MedChemExpress.com](mailto:tech@MedChemExpress.com)

Address: 1 Deer Park Dr, Suite Q, Monmouth Junction, NJ 08852, USA