



# SZABO SCANDIC

Part of Europa Biosite

## Produktinformation



Forschungsprodukte & Biochemikalien



Zellkultur & Verbrauchsmaterial



Diagnostik & molekulare Diagnostik



Laborgeräte & Service

Weitere Information auf den folgenden Seiten!  
See the following pages for more information!



### Lieferung & Zahlungsart

siehe unsere [Liefer- und Versandbedingungen](#)

### Zuschläge

- Mindermengenzuschlag
- Trockeneiszuschlag
- Gefahrgutzuschlag
- Expressversand

### SZABO-SCANDIC HandelsgmbH

Quellenstraße 110, A-1100 Wien

T. +43(0)1 489 3961-0

F. +43(0)1 489 3961-7

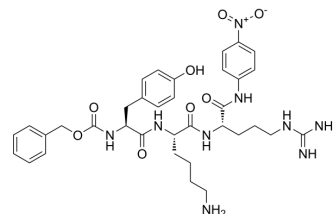
[mail@szabo-scandic.com](mailto:mail@szabo-scandic.com)

[www.szabo-scandic.com](http://www.szabo-scandic.com)

[linkedin.com/company/szaboscandic](https://www.linkedin.com/company/szaboscandic) 

## Z-Tyr-Lys-Arg-pNA

Cat. No.:	HY-P4517
CAS No.:	108318-36-1
Molecular Formula:	C <sub>35</sub> H <sub>45</sub> N <sub>9</sub> O <sub>8</sub>
Molecular Weight:	719.79
Sequence:	Z-Tyr-Lys-{Arg-pNA}
Sequence Shortening:	Z-YK-{Arg-pNA}
Target:	Others
Pathway:	Others
Storage:	Sealed storage, away from moisture
	Powder    -80°C    2 years
	-20°C    1 year



\* In solvent : -80°C, 6 months; -20°C, 1 month (sealed storage, away from moisture)

### SOLVENT & SOLUBILITY

#### In Vitro

DMSO : 100 mg/mL (138.93 mM; Need ultrasonic)

Concentration	Solvent	Mass		
		1 mg	5 mg	10 mg
Preparing Stock Solutions	1 mM	1.3893 mL	6.9465 mL	13.8929 mL
	5 mM	0.2779 mL	1.3893 mL	2.7786 mL
	10 mM	0.1389 mL	0.6946 mL	1.3893 mL

Please refer to the solubility information to select the appropriate solvent.

### BIOLOGICAL ACTIVITY

#### Description

Z-Tyr-Lys-Arg-pNA is a chromogenic substrate. Z-Tyr-Lys-Arg-pNA can be used to detect the activity of subtilisin-type and yapsin-like proteases<sup>[1]</sup>.

### REFERENCES

[1]. Ganatra MB, et al. A set of aspartyl protease-deficient strains for improved expression of heterologous proteins in *Kluyveromyces lactis*. *FEMS Yeast Res.* 2011 Mar;11(2):168-78.

---

**Caution: Product has not been fully validated for medical applications. For research use only.**

Tel: 609-228-6898

Fax: 609-228-5909

E-mail: [tech@MedChemExpress.com](mailto:tech@MedChemExpress.com)

Address: 1 Deer Park Dr, Suite Q, Monmouth Junction, NJ 08852, USA