



SZABO SCANDIC

Part of Europa Biosite

Produktinformation



Forschungsprodukte & Biochemikalien



Zellkultur & Verbrauchsmaterial



Diagnostik & molekulare Diagnostik



Laborgeräte & Service

Weitere Information auf den folgenden Seiten!
See the following pages for more information!



Lieferung & Zahlungsart

siehe unsere [Liefer- und Versandbedingungen](#)

Zuschläge

- Mindermengenzuschlag
- Trockeneiszuschlag
- Gefahrgutzuschlag
- Expressversand

SZABO-SCANDIC HandelsgmbH

Quellenstraße 110, A-1100 Wien

T. +43(0)1 489 3961-0

F. +43(0)1 489 3961-7

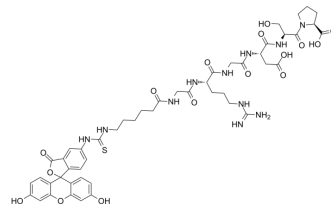
mail@szabo-scandic.com

www.szabo-scandic.com

[linkedin.com/company/szaboscandic](https://www.linkedin.com/company/szaboscandic)

FITC-Ahx-Gly-Arg-Gly-Asp-Ser-Pro

Cat. No.: HY-P4896
CAS No.: 2022956-44-9
Molecular Formula: C₄₉H₅₉N₁₁O₁₆S
Molecular Weight: 1090.12
Sequence: {FITC-εAhx}-Gly-Arg-Gly-Asp-Ser-Pro
Sequence Shortening: {FITC-εAhx}-GRGDSP
Target: Integrin
Pathway: Cytoskeleton
Storage: Sealed storage, away from moisture
 Powder -80°C 2 years
 -20°C 1 year



* In solvent : -80°C, 6 months; -20°C, 1 month (sealed storage, away from moisture)

SOLVENT & SOLUBILITY

In Vitro

DMSO : 50 mg/mL (45.87 mM; Need ultrasonic)

Concentration	Solvent	Mass		
		1 mg	5 mg	10 mg
Preparing Stock Solutions	1 mM	0.9173 mL	4.5867 mL	9.1733 mL
	5 mM	0.1835 mL	0.9173 mL	1.8347 mL
	10 mM	0.0917 mL	0.4587 mL	0.9173 mL

Please refer to the solubility information to select the appropriate solvent.

BIOLOGICAL ACTIVITY

Description

FITC-Ahx Gly Arg Gly Asp Ser Pro is a GRGDSP (HY-P0290) coupled to FITC. GRGDSP is an integrin inhibitor that can inhibit the adherence of tumor cells to endothelial cells of blood vessels and limit its metastasis^[1].

REFERENCES

[1]. Qian J, et al. Transarterial administration of integrin inhibitor loaded nanoparticles combined with transarterial chemoembolization for treating hepatocellular carcinoma in a rat model. World J Gastroenterol. 2016 Jun 7;22(21):5042-9.

Caution: Product has not been fully validated for medical applications. For research use only.

Tel: 609-228-6898

Fax: 609-228-5909

E-mail: tech@MedChemExpress.com

Address: 1 Deer Park Dr, Suite Q, Monmouth Junction, NJ 08852, USA