



SZABO SCANDIC

Part of Europa Biosite

Produktinformation



Forschungsprodukte & Biochemikalien



Zellkultur & Verbrauchsmaterial



Diagnostik & molekulare Diagnostik



Laborgeräte & Service

Weitere Information auf den folgenden Seiten!
See the following pages for more information!



Lieferung & Zahlungsart

siehe unsere [Liefer- und Versandbedingungen](#)

Zuschläge

- Mindermengenzuschlag
- Trockeneiszuschlag
- Gefahrgutzuschlag
- Expressversand

SZABO-SCANDIC HandelsgmbH

Quellenstraße 110, A-1100 Wien

T. +43(0)1 489 3961-0

F. +43(0)1 489 3961-7

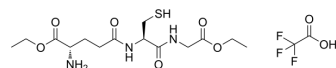
mail@szabo-scandic.com

www.szabo-scandic.com

[linkedin.com/company/szaboscandic](https://www.linkedin.com/company/szaboscandic) 

Glutathione diethyl ester TFA

Cat. No.: HY-P5069A
Molecular Formula: C₁₆H₂₆F₃N₃O₈S
Molecular Weight: 477.45
Sequence: {Ggu(OEt)}-Cys-Gly-{OEt}
Sequence Shortening: {Ggu(OEt)}-CG-{OEt}
Target: Endogenous Metabolite
Pathway: Metabolic Enzyme/Protease
Storage: Sealed storage, away from moisture
 Powder -80°C 2 years
 -20°C 1 year



* In solvent : -80°C, 6 months; -20°C, 1 month (sealed storage, away from moisture)

SOLVENT & SOLUBILITY

In Vitro

H₂O : ≥ 100 mg/mL (209.45 mM)
 * "≥" means soluble, but saturation unknown.

Preparing Stock Solutions	Solvent	Mass	1 mg	5 mg	10 mg
	Concentration				
	1 mM		2.0945 mL	10.4723 mL	20.9446 mL
	5 mM		0.4189 mL	2.0945 mL	4.1889 mL
	10 mM		0.2094 mL	1.0472 mL	2.0945 mL

Please refer to the solubility information to select the appropriate solvent.

BIOLOGICAL ACTIVITY

Description

Glutathione diethyl ester (TFA) is a delivery agent for glutathione monoester, and thus for glutathione, in human cells and therefore could serve to decrease oxidative stress and toxicity^[1].

REFERENCES

[1]. E J Levy, et al. Transport of glutathione diethyl ester into human cells. Proc Natl Acad Sci U S A. 1993 Oct 1;90(19):9171-5.

Caution: Product has not been fully validated for medical applications. For research use only.

Tel: 609-228-6898

Fax: 609-228-5909

E-mail: tech@MedChemExpress.com

Address: 1 Deer Park Dr, Suite Q, Monmouth Junction, NJ 08852, USA