



SZABO SCANDIC

Part of Europa Biosite

Produktinformation



Forschungsprodukte & Biochemikalien



Zellkultur & Verbrauchsmaterial



Diagnostik & molekulare Diagnostik



Laborgeräte & Service

Weitere Information auf den folgenden Seiten!
See the following pages for more information!



Lieferung & Zahlungsart

siehe unsere [Liefer- und Versandbedingungen](#)

Zuschläge

- Mindermengenzuschlag
- Trockeneiszuschlag
- Gefahrgutzuschlag
- Expressversand

SZABO-SCANDIC HandelsgmbH

Quellenstraße 110, A-1100 Wien

T. +43(0)1 489 3961-0

F. +43(0)1 489 3961-7

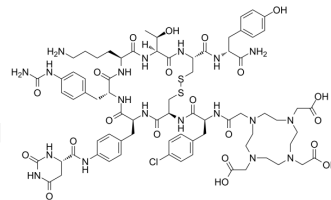
mail@szabo-scandic.com

www.szabo-scandic.com

[linkedin.com/company/szaboscandic](https://www.linkedin.com/company/szaboscandic) 

DOTA-JR11

Cat. No.:	HY-P5128
CAS No.:	1039726-31-2
Molecular Formula:	C ₇₄ H ₉₈ ClN ₁₉ O ₂₁ S ₂
Molecular Weight:	1689.27
Sequence:	DOTA-[p-Cl-Phe-cyclo(D-Cys-Phe-D-4-amino-Phe(carbamoyl)-Lys-Thr-Cys)D-Tyr-NH ₂]
Target:	Somatostatin Receptor
Pathway:	GPCR/G Protein; Neuronal Signaling
Storage:	Sealed storage, away from moisture and light Powder -80°C 2 years -20°C 1 year



* In solvent : -80°C, 6 months; -20°C, 1 month (sealed storage, away from moisture and light)

SOLVENT & SOLUBILITY

In Vitro

DMSO : 25 mg/mL (14.80 mM; Need ultrasonic)

Preparing Stock Solutions	Solvent Concentration	Mass		
		1 mg	5 mg	10 mg
	1 mM	0.5920 mL	2.9599 mL	5.9197 mL
	5 mM	0.1184 mL	0.5920 mL	1.1839 mL
	10 mM	0.0592 mL	0.2960 mL	0.5920 mL

Please refer to the solubility information to select the appropriate solvent.

BIOLOGICAL ACTIVITY

Description

DOTA-JR11 is a somatostatin receptor 2 (SSTR2) antagonist. DOTA-JR11 can be labeled by 68Ga, used for paired imaging in neuroendocrine tumors (NETs) research^[1].

REFERENCES

[1]. Krebs S, et al. Comparison of 68Ga-DOTA-JR11 PET/CT with dosimetric 177Lu-satoreotide tetraxetan (177Lu-DOTA-JR11) SPECT/CT in patients with metastatic neuroendocrine tumors undergoing peptide receptor radionuclide therapy. *Eur J Nucl Med Mol Imaging*. 2020 Dec;47(13):3047-3057.

Caution: Product has not been fully validated for medical applications. For research use only.

Tel: 609-228-6898

Fax: 609-228-5909

E-mail: tech@MedChemExpress.com

Address: 1 Deer Park Dr, Suite Q, Monmouth Junction, NJ 08852, USA