



# SZABO SCANDIC

Part of Europa Biosite

## Produktinformation



Forschungsprodukte & Biochemikalien



Zellkultur & Verbrauchsmaterial



Diagnostik & molekulare Diagnostik



Laborgeräte & Service

Weitere Information auf den folgenden Seiten!  
See the following pages for more information!



### Lieferung & Zahlungsart

siehe unsere [Liefer- und Versandbedingungen](#)

### Zuschläge

- Mindermengenzuschlag
- Trockeneiszuschlag
- Gefahrgutzuschlag
- Expressversand

### SZABO-SCANDIC HandelsgmbH

Quellenstraße 110, A-1100 Wien

T. +43(0)1 489 3961-0

F. +43(0)1 489 3961-7

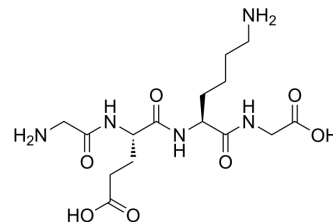
[mail@szabo-scandic.com](mailto:mail@szabo-scandic.com)

[www.szabo-scandic.com](http://www.szabo-scandic.com)

[linkedin.com/company/szaboscandic](https://www.linkedin.com/company/szaboscandic) 

## Tetrapeptide-21

Cat. No.:	HY-P5232
CAS No.:	960608-17-7
Molecular Formula:	C <sub>15</sub> H <sub>27</sub> N <sub>5</sub> O <sub>7</sub>
Molecular Weight:	389.4
Sequence:	Gly-Glu-Lys-Gly
Sequence Shortening:	GEKG
Target:	Others
Pathway:	Others
Storage:	Sealed storage, away from moisture
	Powder    -80°C    2 years
	-20°C    1 year



\* In solvent : -80°C, 6 months; -20°C, 1 month (sealed storage, away from moisture)

### SOLVENT & SOLUBILITY

#### In Vitro

H<sub>2</sub>O : ≥ 200 mg/mL (513.61 mM)

\* "≥" means soluble, but saturation unknown.

	Solvent Concentration	Mass		
		1 mg	5 mg	10 mg
Preparing Stock Solutions	1 mM	2.5681 mL	12.8403 mL	25.6805 mL
	5 mM	0.5136 mL	2.5681 mL	5.1361 mL
	10 mM	0.2568 mL	1.2840 mL	2.5681 mL

Please refer to the solubility information to select the appropriate solvent.

### BIOLOGICAL ACTIVITY

#### Description

Tetrapeptide-21 is a bioactive peptide with anti-wrinkle and reducing skin hyperpigmentation effect, and has been reported used as a cosmetic ingredient<sup>[1]</sup>.

### REFERENCES

[1]. Beldio Research GmbH, et al. Topical Peptide Treatments with Effective Anti-Aging Results. Cosmetics 2017, 4(2), 16

---

**Caution: Product has not been fully validated for medical applications. For research use only.**

Tel: 609-228-6898

Fax: 609-228-5909

E-mail: [tech@MedChemExpress.com](mailto:tech@MedChemExpress.com)

Address: 1 Deer Park Dr, Suite Q, Monmouth Junction, NJ 08852, USA