



SZABO SCANDIC

Part of Europa Biosite

Produktinformation



Forschungsprodukte & Biochemikalien



Zellkultur & Verbrauchsmaterial



Diagnostik & molekulare Diagnostik



Laborgeräte & Service

Weitere Information auf den folgenden Seiten!
See the following pages for more information!



Lieferung & Zahlungsart

siehe unsere [Liefer- und Versandbedingungen](#)

Zuschläge

- Mindermengenzuschlag
- Trockeneiszuschlag
- Gefahrgutzuschlag
- Expressversand

SZABO-SCANDIC HandelsgmbH

Quellenstraße 110, A-1100 Wien

T. +43(0)1 489 3961-0

F. +43(0)1 489 3961-7

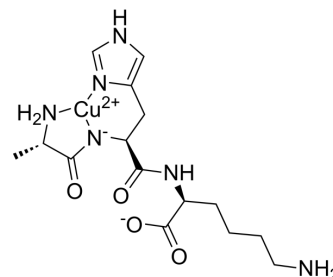
mail@szabo-scandic.com

www.szabo-scandic.com

[linkedin.com/company/szaboscandic](https://www.linkedin.com/company/szaboscandic) 

Copper tripeptide-3

Cat. No.:	HY-P5243
CAS No.:	767286-83-9
Molecular Formula:	C ₁₅ H ₂₄ CuN ₆ O ₄
Molecular Weight:	415.93
Sequence:	Ala-His-{Lys-Cu}
Sequence Shortening:	AH-{Lys-Cu}
Target:	Others
Pathway:	Others
Storage:	Sealed storage, away from moisture
	Powder -80°C 2 years
	-20°C 1 year



* In solvent : -80°C, 6 months; -20°C, 1 month (sealed storage, away from moisture)

SOLVENT & SOLUBILITY

In Vitro

H₂O : ≥ 43.75 mg/mL (105.19 mM)
 DMSO : 4.38 mg/mL (10.53 mM; Need ultrasonic)
 * "≥" means soluble, but saturation unknown.

	Solvent Concentration	Mass	1 mg	5 mg	10 mg
Preparing Stock Solutions	1 mM		2.4043 mL	12.0213 mL	24.0425 mL
	5 mM		0.4809 mL	2.4043 mL	4.8085 mL
	10 mM		0.2404 mL	1.2021 mL	2.4043 mL

Please refer to the solubility information to select the appropriate solvent.

BIOLOGICAL ACTIVITY

Description

Copper tripeptide-3 (AHK-Cu) is a bioactive peptide with promotion of hair growth effect and has been reported used as a cosmetic ingredient^[1].

REFERENCES

[1]. Pyo HK, et al. The effect of tripeptide-copper complex on human hair growth in vitro. Arch Pharm Res. 2007;30(7):834-839.

Caution: Product has not been fully validated for medical applications. For research use only.

Tel: 609-228-6898

Fax: 609-228-5909

E-mail: tech@MedChemExpress.com

Address: 1 Deer Park Dr, Suite Q, Monmouth Junction, NJ 08852, USA