



SZABO SCANDIC

Part of Europa Biosite

Produktinformation



Forschungsprodukte & Biochemikalien



Zellkultur & Verbrauchsmaterial



Diagnostik & molekulare Diagnostik



Laborgeräte & Service

Weitere Information auf den folgenden Seiten!
See the following pages for more information!



Lieferung & Zahlungsart

siehe unsere [Liefer- und Versandbedingungen](#)

Zuschläge

- Mindermengenzuschlag
- Trockeneiszuschlag
- Gefahrgutzuschlag
- Expressversand

SZABO-SCANDIC HandelsgmbH

Quellenstraße 110, A-1100 Wien

T. +43(0)1 489 3961-0

F. +43(0)1 489 3961-7

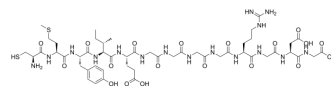
mail@szabo-scandic.com

www.szabo-scandic.com

[linkedin.com/company/szaboscandic](https://www.linkedin.com/company/szaboscandic) 

Oligopeptide-24

Cat. No.:	HY-P5257
CAS No.:	1018685-16-9
Molecular Formula:	C ₅₀ H ₇₈ N ₁₆ O ₁₉ S ₂
Molecular Weight:	1271.38
Sequence:	Cys-Met-Tyr-Ile-Glu-Gly-Gly-Gly-Gly-Arg-Gly-Asp-Gly
Sequence Shortening:	CMYIEGGGGRGDG
Target:	Others
Pathway:	Others
Storage:	Sealed storage, away from moisture
	Powder -80°C 2 years
	-20°C 1 year



* In solvent : -80°C, 6 months; -20°C, 1 month (sealed storage, away from moisture)

SOLVENT & SOLUBILITY

In Vitro

DMSO : 10 mg/mL (7.87 mM; Need ultrasonic)

Preparing Stock Solutions	Solvent		Mass		
	Concentration		1 mg	5 mg	10 mg
	1 mM		0.7865 mL	3.9327 mL	7.8655 mL
	5 mM		0.1573 mL	0.7865 mL	1.5731 mL
	10 mM		---	---	---

Please refer to the solubility information to select the appropriate solvent.

BIOLOGICAL ACTIVITY

Description

Oligopeptide-24 (CG-EDP3) is a bioactive peptide with skin repair effect and has been reported used as a cosmetic ingredient [1].

REFERENCES

[1]. Maria Giannakou, et al. Quantification of oligopeptide-20 and oligopeptide-24 in cosmetic creams using hydrophilic interaction liquid chromatography with electrospray ionization mass spectrometry. Volume1, Issue3 March 2018, Pages 159-167

Caution: Product has not been fully validated for medical applications. For research use only.

Tel: 609-228-6898

Fax: 609-228-5909

E-mail: tech@MedChemExpress.com

Address: 1 Deer Park Dr, Suite Q, Monmouth Junction, NJ 08852, USA