



SZABO SCANDIC

Part of Europa Biosite

Produktinformation



Forschungsprodukte & Biochemikalien



Zellkultur & Verbrauchsmaterial



Diagnostik & molekulare Diagnostik



Laborgeräte & Service

Weitere Information auf den folgenden Seiten!
See the following pages for more information!



Lieferung & Zahlungsart

siehe unsere [Liefer- und Versandbedingungen](#)

Zuschläge

- Mindermengenzuschlag
- Trockeneiszuschlag
- Gefahrgutzuschlag
- Expressversand

SZABO-SCANDIC HandelsgmbH

Quellenstraße 110, A-1100 Wien

T. +43(0)1 489 3961-0

F. +43(0)1 489 3961-7

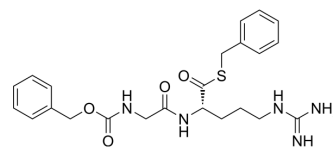
mail@szabo-scandic.com

www.szabo-scandic.com

[linkedin.com/company/szaboscandic](https://www.linkedin.com/company/szaboscandic) 

Z-Gly-Arg-Thiobenzyl ester

Cat. No.:	HY-P5278
CAS No.:	130698-88-3
Molecular Formula:	C ₂₃ H ₂₉ N ₅ O ₄ S
Molecular Weight:	471.57
Sequence:	{Z}-Gly-Arg-{Thiobenzyl ester}
Sequence Shortening:	{Z}-GR-{Thiobenzyl ester}
Target:	Others
Pathway:	Others
Storage:	Sealed storage, away from moisture
	Powder -80°C 2 years
	-20°C 1 year



* In solvent : -80°C, 6 months; -20°C, 1 month (sealed storage, away from moisture)

SOLVENT & SOLUBILITY

In Vitro

DMSO : 100 mg/mL (212.06 mM; Need ultrasonic)

Preparing Stock Solutions	Concentration	Mass		
		1 mg	5 mg	10 mg
	1 mM	2.1206 mL	10.6029 mL	21.2058 mL
	5 mM	0.4241 mL	2.1206 mL	4.2412 mL
	10 mM	0.2121 mL	1.0603 mL	2.1206 mL

Please refer to the solubility information to select the appropriate solvent.

BIOLOGICAL ACTIVITY

Description

Z-Gly-Arg-Thiobenzyl ester is a chromogenic substrate for plasmogen-activated serine proteases^[1].

REFERENCES

[1]. Garrigues, et al. Borrelia burgdorferi ErpB and ErpQ inhibit C1 complex of the classical pathway of complement through a novel mechanism. Retrieved from the Scholarship.

Caution: Product has not been fully validated for medical applications. For research use only.

Tel: 609-228-6898

Fax: 609-228-5909

E-mail: tech@MedChemExpress.com

Address: 1 Deer Park Dr, Suite Q, Monmouth Junction, NJ 08852, USA