



SZABO SCANDIC

Part of Europa Biosite

Produktinformation



Forschungsprodukte & Biochemikalien



Zellkultur & Verbrauchsmaterial



Diagnostik & molekulare Diagnostik



Laborgeräte & Service

Weitere Information auf den folgenden Seiten!
See the following pages for more information!



Lieferung & Zahlungsart

siehe unsere [Liefer- und Versandbedingungen](#)

Zuschläge

- Mindermengenzuschlag
- Trockeneiszuschlag
- Gefahrgutzuschlag
- Expressversand

SZABO-SCANDIC HandelsgmbH

Quellenstraße 110, A-1100 Wien

T. +43(0)1 489 3961-0

F. +43(0)1 489 3961-7

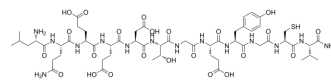
mail@szabo-scandic.com

www.szabo-scandic.com

[linkedin.com/company/szaboscandic](https://www.linkedin.com/company/szaboscandic) 

mLR12

Cat. No.:	HY-P5521
Molecular Formula:	C ₅₅ H ₈₄ N ₁₄ O ₂₃ S
Molecular Weight:	1341.4
Sequence:	Leu-Gln-Glu-Glu-Asp-Thr-Gly-Glu-Tyr-Gly-Cys-Val-NH ₂
Sequence Shortening:	LQEEDTGEYGCV-NH ₂
Target:	Others
Pathway:	Others
Storage:	Sealed storage, away from moisture
	Powder -80°C 2 years
	-20°C 1 year



* In solvent : -80°C, 6 months; -20°C, 1 month (sealed storage, away from moisture)

SOLVENT & SOLUBILITY

In Vitro

DMSO : 100 mg/mL (74.55 mM; Need ultrasonic)

Solvent	Mass	Concentration		
		1 mg	5 mg	10 mg
Preparing Stock Solutions	1 mM	0.7455 mL	3.7274 mL	7.4549 mL
	5 mM	0.1491 mL	0.7455 mL	1.4910 mL
	10 mM	0.0745 mL	0.3727 mL	0.7455 mL

Please refer to the solubility information to select the appropriate solvent.

BIOLOGICAL ACTIVITY

Description

mLR12 is a Trem1 inhibitory peptide. mLR12 decreases aortic rupture rate in BAPN-induced Thoracic aortic aneurysm and dissection (TAAD) mice model^[1].

REFERENCES

[1]. Liu X, et al. Single-cell RNA sequencing identifies an Il1rn+/Trem1+ macrophage subpopulation as a cellular target for mitigating the progression of thoracic aortic aneurysm and dissection. Cell Discov. 2022 Feb 8;8(1):11.

Caution: Product has not been fully validated for medical applications. For research use only.

Tel: 609-228-6898

Fax: 609-228-5909

E-mail: tech@MedChemExpress.com

Address: 1 Deer Park Dr, Suite Q, Monmouth Junction, NJ 08852, USA