



SZABO SCANDIC

Part of Europa Biosite

Produktinformation



Forschungsprodukte & Biochemikalien



Zellkultur & Verbrauchsmaterial



Diagnostik & molekulare Diagnostik



Laborgeräte & Service

Weitere Information auf den folgenden Seiten!
See the following pages for more information!



Lieferung & Zahlungsart

siehe unsere [Liefer- und Versandbedingungen](#)

Zuschläge

- Mindermengenzuschlag
- Trockeneiszuschlag
- Gefahrgutzuschlag
- Expressversand

SZABO-SCANDIC HandelsgmbH

Quellenstraße 110, A-1100 Wien

T. +43(0)1 489 3961-0

F. +43(0)1 489 3961-7

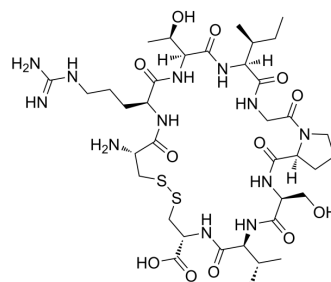
mail@szabo-scandic.com

www.szabo-scandic.com

[linkedin.com/company/szaboscandic](https://www.linkedin.com/company/szaboscandic) 

CRT

Cat. No.: HY-P5533
CAS No.: 2414254-70-7
Molecular Formula: C₃₇H₆₄N₁₂O₁₂S₂
Molecular Weight: 933.11
Sequence: Cys-Arg-Thr-Ile-Gly-Pro-Ser-Val-Cys (Cys1-Cys5)
Sequence Shortening: CRTIGPSVC (Cys1-Cys5)
Target: Others
Pathway: Others
Storage: Sealed storage, away from moisture



Powder -80°C 2 years
 -20°C 1 year

* In solvent : -80°C, 6 months; -20°C, 1 month (sealed storage, away from moisture)

SOLVENT & SOLUBILITY

In Vitro

DMSO : 14.29 mg/mL (15.31 mM; Need ultrasonic)

Preparing Stock Solutions	Solvent	1 mg	5 mg	10 mg
	Concentration			
	1 mM	1.0717 mL	5.3584 mL	10.7169 mL
	5 mM	0.2143 mL	1.0717 mL	2.1434 mL
	10 mM	0.1072 mL	0.5358 mL	1.0717 mL

Please refer to the solubility information to select the appropriate solvent.

BIOLOGICAL ACTIVITY

Description

CRT, an iron peptide mimic, can bind to apo-transferrin (apo-Tf). CRT can be used to modify nanoparticles, and enhances drug delivery efficiency^[1].

REFERENCES

[1]. Liu M, et al. Iron-mimic peptide converts transferrin from foe to friend for orally targeting insulin delivery. J Mater Chem B. 2018 Jan 28;6(4):593-601.

Caution: Product has not been fully validated for medical applications. For research use only.

Tel: 609-228-6898

Fax: 609-228-5909

E-mail: tech@MedChemExpress.com

Address: 1 Deer Park Dr, Suite Q, Monmouth Junction, NJ 08852, USA