



SZABO SCANDIC

Part of Europa Biosite

Produktinformation



Forschungsprodukte & Biochemikalien



Zellkultur & Verbrauchsmaterial



Diagnostik & molekulare Diagnostik



Laborgeräte & Service

Weitere Information auf den folgenden Seiten!
See the following pages for more information!



Lieferung & Zahlungsart

siehe unsere [Liefer- und Versandbedingungen](#)

Zuschläge

- Mindermengenzuschlag
- Trockeneiszuschlag
- Gefahrgutzuschlag
- Expressversand

SZABO-SCANDIC HandelsgmbH

Quellenstraße 110, A-1100 Wien

T. +43(0)1 489 3961-0

F. +43(0)1 489 3961-7

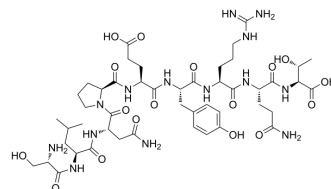
mail@szabo-scandic.com

www.szabo-scandic.com

[linkedin.com/company/szaboscandic](https://www.linkedin.com/company/szaboscandic) 

PKC α (C2-4) inhibitor peptide

Cat. No.:	HY-P5881
Molecular Formula:	C ₄₇ H ₇₄ N ₁₄ O ₁₇
Molecular Weight:	1107.17
Sequence:	Ser-Leu-Asn-Pro-Glu-Tyr-Arg-Gln-Thr
Sequence Shortening:	SLNPEYRQT
Target:	PKC
Pathway:	Epigenetics; TGF-beta/Smad
Storage:	Sealed storage, away from moisture
	Powder -80°C 2 years
	-20°C 1 year



* In solvent : -80°C, 6 months; -20°C, 1 month (sealed storage, away from moisture)

SOLVENT & SOLUBILITY

In Vitro

DMSO : 100 mg/mL (90.32 mM; Need ultrasonic)

Preparing Stock Solutions	Solvent Concentration	Mass		
		1 mg	5 mg	10 mg
	1 mM	0.9032 mL	4.5160 mL	9.0320 mL
	5 mM	0.1806 mL	0.9032 mL	1.8064 mL
	10 mM	0.0903 mL	0.4516 mL	0.9032 mL

Please refer to the solubility information to select the appropriate solvent.

BIOLOGICAL ACTIVITY

Description PKC α (C2-4) inhibitor peptide is a PKC α specific inhibitor peptide that blocks the inhibition of I_{Kr} by the α_{1A} adrenoreceptor agonist A-61603 (HY-101366)^[1].

IC₅₀ & Target PKC α ^[1]

REFERENCES

[1]. Liu X, et al. Different protein kinase C isoenzymes mediate inhibition of cardiac rapidly activating delayed rectifier K⁺ current by different G-protein coupled receptors. Br J Pharmacol. 2017 Dec;174(23):4464-4477.

Caution: Product has not been fully validated for medical applications. For research use only.

Tel: 609-228-6898

Fax: 609-228-5909

E-mail: tech@MedChemExpress.com

Address: 1 Deer Park Dr, Suite Q, Monmouth Junction, NJ 08852, USA