



# SZABO SCANDIC

Part of Europa Biosite

## Produktinformation



Forschungsprodukte & Biochemikalien



Zellkultur & Verbrauchsmaterial



Diagnostik & molekulare Diagnostik



Laborgeräte & Service

Weitere Information auf den folgenden Seiten!  
See the following pages for more information!



### Lieferung & Zahlungsart

siehe unsere [Liefer- und Versandbedingungen](#)

### Zuschläge

- Mindermengenzuschlag
- Trockeneiszuschlag
- Gefahrgutzuschlag
- Expressversand

### SZABO-SCANDIC HandelsgmbH

Quellenstraße 110, A-1100 Wien

T. +43(0)1 489 3961-0

F. +43(0)1 489 3961-7

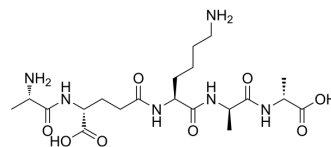
[mail@szabo-scandic.com](mailto:mail@szabo-scandic.com)

[www.szabo-scandic.com](http://www.szabo-scandic.com)

[linkedin.com/company/szaboscandic](https://www.linkedin.com/company/szaboscandic) 

## Ala-D-γ-Glu-Lys-D-Ala-D-Ala

Cat. No.:	HY-P5919
CAS No.:	2614-55-3
Molecular Formula:	C <sub>20</sub> H <sub>36</sub> N <sub>6</sub> O <sub>8</sub>
Molecular Weight:	488.54
Sequence:	Ala-{d-γGlu}-Lys-{d-Ala}-{d-Ala}
Sequence Shortening:	A-{d-γGlu}-K-{d-Ala}-{d-Ala}
Target:	Others
Pathway:	Others
Storage:	Sealed storage, away from moisture
	Powder    -80°C    2 years
	-20°C    1 year



\* In solvent : -80°C, 6 months; -20°C, 1 month (sealed storage, away from moisture)

### SOLVENT & SOLUBILITY

#### In Vitro

H<sub>2</sub>O : ≥ 100 mg/mL (204.69 mM)

\* "≥" means soluble, but saturation unknown.

Concentration	Mass		
	1 mg	5 mg	10 mg
1 mM	2.0469 mL	10.2346 mL	20.4692 mL
5 mM	0.4094 mL	2.0469 mL	4.0938 mL
10 mM	0.2047 mL	1.0235 mL	2.0469 mL

Please refer to the solubility information to select the appropriate solvent.

### BIOLOGICAL ACTIVITY

#### Description

Ala-D-γ-Glu-Lys-D-Ala-D-Ala is the pentapeptide tail of the peptidoglycan precursor UDPMurNAc-I-Ala-γ-d-Glu-I-Lys(Gly)(5)-d-Ala-d-Ala<sup>[1]</sup>.

### REFERENCES

[1]. Tossavainen H, et al Structural and Functional Insights Into Lysostaphin-Substrate Interaction. Front Mol Biosci. 2018;5:60. Published 2018 Jul 3.

---

**Caution: Product has not been fully validated for medical applications. For research use only.**

Tel: 609-228-6898

Fax: 609-228-5909

E-mail: [tech@MedChemExpress.com](mailto:tech@MedChemExpress.com)

Address: 1 Deer Park Dr, Suite Q, Monmouth Junction, NJ 08852, USA