



# SZABO SCANDIC

Part of Europa Biosite

## Produktinformation



Forschungsprodukte & Biochemikalien



Zellkultur & Verbrauchsmaterial



Diagnostik & molekulare Diagnostik



Laborgeräte & Service

Weitere Information auf den folgenden Seiten!  
See the following pages for more information!



### Lieferung & Zahlungsart

siehe unsere [Liefer- und Versandbedingungen](#)

### Zuschläge

- Mindermengenzuschlag
- Trockeneiszuschlag
- Gefahrgutzuschlag
- Expressversand

### SZABO-SCANDIC HandelsgmbH

Quellenstraße 110, A-1100 Wien

T. +43(0)1 489 3961-0

F. +43(0)1 489 3961-7

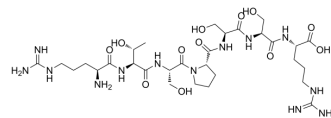
[mail@szabo-scandic.com](mailto:mail@szabo-scandic.com)

[www.szabo-scandic.com](http://www.szabo-scandic.com)

[linkedin.com/company/szaboscandic](https://www.linkedin.com/company/szaboscandic) 

## RTSPSSR

Cat. No.:	HY-P6083
CAS No.:	1995062-44-6
Molecular Formula:	C <sub>30</sub> H <sub>55</sub> N <sub>13</sub> O <sub>12</sub>
Molecular Weight:	789.84
Sequence:	Arg-Thr-Ser-Pro-Ser-Ser-Arg
Sequence Shortening:	RTSPSSR
Target:	Others
Pathway:	Others
Storage:	Sealed storage, away from moisture
	Powder    -80°C    2 years
	-20°C    1 year



\* In solvent : -80°C, 6 months; -20°C, 1 month (sealed storage, away from moisture)

## SOLVENT & SOLUBILITY

### In Vitro

DMSO : 50 mg/mL (63.30 mM; Need ultrasonic)

Preparing Stock Solutions	Solvent Concentration	Mass		
		1 mg	5 mg	10 mg
	1 mM	1.2661 mL	6.3304 mL	12.6608 mL
	5 mM	0.2532 mL	1.2661 mL	2.5322 mL
	10 mM	0.1266 mL	0.6330 mL	1.2661 mL

Please refer to the solubility information to select the appropriate solvent.

## BIOLOGICAL ACTIVITY

### Description

RTSPSSR is synthesized peptide, which binds specifically to claudin-1 and visualizes the CRC tumor in mice, through near-infrared fluorescence imaging<sup>[1]</sup>.

## REFERENCES

[1]. Rabinsky EF, et al., Overexpressed Claudin-1 Can Be Visualized Endoscopically in Colonic Adenomas In Vivo. Cell Mol Gastroenterol Hepatol. 2015 Dec 13;2(2):222-237.

---

**Caution: Product has not been fully validated for medical applications. For research use only.**

Tel: 609-228-6898

Fax: 609-228-5909

E-mail: [tech@MedChemExpress.com](mailto:tech@MedChemExpress.com)

Address: 1 Deer Park Dr, Suite Q, Monmouth Junction, NJ 08852, USA