



SZABO SCANDIC

Part of Europa Biosite

Produktinformation



Forschungsprodukte & Biochemikalien



Zellkultur & Verbrauchsmaterial



Diagnostik & molekulare Diagnostik



Laborgeräte & Service

Weitere Information auf den folgenden Seiten!
See the following pages for more information!



Lieferung & Zahlungsart

siehe unsere [Liefer- und Versandbedingungen](#)

Zuschläge

- Mindermengenzuschlag
- Trockeneiszuschlag
- Gefahrgutzuschlag
- Expressversand

SZABO-SCANDIC HandelsgmbH

Quellenstraße 110, A-1100 Wien

T. +43(0)1 489 3961-0

F. +43(0)1 489 3961-7

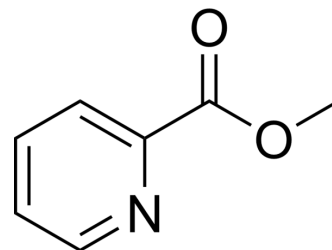
mail@szabo-scandic.com

www.szabo-scandic.com

[linkedin.com/company/szaboscandic](https://www.linkedin.com/company/szaboscandic) 

Methyl picolinate

Cat. No.:	HY-W005458	
CAS No.:	2459-07-6	
Molecular Formula:	C ₇ H ₇ NO ₂	
Molecular Weight:	137.14	
Target:	Biochemical Assay Reagents	
Pathway:	Others	
Storage:	Pure form	-20°C 3 years 4°C 2 years
	In solvent	-80°C 6 months -20°C 1 month



SOLVENT & SOLUBILITY

In Vitro

DMSO : ≥ 100 mg/mL (729.18 mM)
 * "≥" means soluble, but saturation unknown.

Concentration	Solvent	Mass		
		1 mg	5 mg	10 mg
Preparing Stock Solutions	1 mM	7.2918 mL	36.4591 mL	72.9182 mL
	5 mM	1.4584 mL	7.2918 mL	14.5836 mL
	10 mM	0.7292 mL	3.6459 mL	7.2918 mL

Please refer to the solubility information to select the appropriate solvent.

In Vivo

- Add each solvent one by one: 10% DMSO >> 40% PEG300 >> 5% Tween-80 >> 45% saline
Solubility: ≥ 2.5 mg/mL (18.23 mM); Clear solution
- Add each solvent one by one: 10% DMSO >> 90% (20% SBE-β-CD in saline)
Solubility: ≥ 2.5 mg/mL (18.23 mM); Clear solution
- Add each solvent one by one: 10% DMSO >> 90% corn oil
Solubility: ≥ 2.5 mg/mL (18.23 mM); Clear solution

BIOLOGICAL ACTIVITY

Description

Methyl picolinate is a biochemical reagent that can be used as a biological material or organic compound for life science related research.

Caution: Product has not been fully validated for medical applications. For research use only.

Tel: 609-228-6898

Fax: 609-228-5909

E-mail: tech@MedChemExpress.com

Address: 1 Deer Park Dr, Suite Q, Monmouth Junction, NJ 08852, USA