



# SZABO SCANDIC

Part of Europa Biosite

## Produktinformation



Forschungsprodukte & Biochemikalien



Zellkultur & Verbrauchsmaterial



Diagnostik & molekulare Diagnostik



Laborgeräte & Service

Weitere Information auf den folgenden Seiten!  
See the following pages for more information!



### Lieferung & Zahlungsart

siehe unsere [Liefer- und Versandbedingungen](#)

### Zuschläge

- Mindermengenzuschlag
- Trockeneiszuschlag
- Gefahrgutzuschlag
- Expressversand

### SZABO-SCANDIC HandelsgmbH

Quellenstraße 110, A-1100 Wien

T. +43(0)1 489 3961-0

F. +43(0)1 489 3961-7

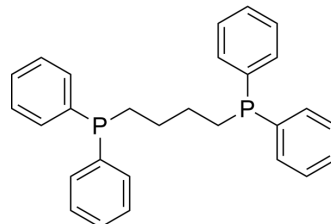
[mail@szabo-scandic.com](mailto:mail@szabo-scandic.com)

[www.szabo-scandic.com](http://www.szabo-scandic.com)

[linkedin.com/company/szaboscandic](https://www.linkedin.com/company/szaboscandic) 

## 1,4-Bis(diphenylphosphino)butane

|                    |  |
|--------------------|--|
| Cat. No.:          | HY-W007569   |
| CAS No.:           | 7688-25-7  |
| Molecular Formula: | C <sub>28</sub> H <sub>28</sub> P <sub>2</sub>   |
| Molecular Weight:  | 426.47   |
| Target:            | Biochemical Assay Reagents   |
| Pathway:           | Others   |
| Storage:           | 4°C, protect from light, stored under nitrogen<br>* In solvent : -80°C, 6 months; -20°C, 1 month (protect from light, stored under nitrogen) |



### BIOLOGICAL ACTIVITY

|             |  |
|-------------|--|
| Description | 1,4-Bis(diphenylphosphino)butane is a biochemical reagent that can be used as a biological material or organic compound for life science related research.   |
| In Vitro    | 1,4-Bis(diphenylphosphino)butane is used in Suzuki reaction. It plays an essential role as a ligand in palladium(0)-catalyzed acylcyanation of arylacetylenes and deprotection of allyloxycarbamates. It acts as a ligand for alkylations, isomerization reactions and in organometallic chemistry. Furthermore, it is used in Heck reaction, Negishi coupling and Sonogashira coupling. In addition to this, it is useful in organometallic chemistry.<br>MCE has not independently confirmed the accuracy of these methods. They are for reference only. |

**Caution: Product has not been fully validated for medical applications. For research use only.**

Tel: 609-228-6898

Fax: 609-228-5909

E-mail: tech@MedChemExpress.com

Address: 1 Deer Park Dr, Suite Q, Monmouth Junction, NJ 08852, USA