



# SZABO SCANDIC

Part of Europa Biosite

## Produktinformation



Forschungsprodukte & Biochemikalien



Zellkultur & Verbrauchsmaterial



Diagnostik & molekulare Diagnostik



Laborgeräte & Service

Weitere Information auf den folgenden Seiten!  
See the following pages for more information!



### Lieferung & Zahlungsart

siehe unsere [Liefer- und Versandbedingungen](#)

### Zuschläge

- Mindermengenzuschlag
- Trockeneiszuschlag
- Gefahrgutzuschlag
- Expressversand

### SZABO-SCANDIC HandelsgmbH

Quellenstraße 110, A-1100 Wien

T. +43(0)1 489 3961-0

F. +43(0)1 489 3961-7

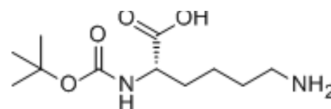
[mail@szabo-scandic.com](mailto:mail@szabo-scandic.com)

[www.szabo-scandic.com](http://www.szabo-scandic.com)

[linkedin.com/company/szaboscandic](https://www.linkedin.com/company/szaboscandic) 

## Boc-Lys-OH

Cat. No.:	HY-W007618
CAS No.:	13734-28-6
Molecular Formula:	C <sub>11</sub> H <sub>22</sub> N <sub>2</sub> O <sub>4</sub>
Molecular Weight:	246.3
Sequence:	{Boc-Lys}
Sequence Shortening:	{Boc-Lys}
Target:	Others
Pathway:	Others
Storage:	4°C, protect from light * In solvent : -80°C, 6 months; -20°C, 1 month (protect from light)



### SOLVENT & SOLUBILITY

#### In Vitro

H<sub>2</sub>O : 100 mg/mL (406.01 mM; Need ultrasonic)

Concentration	Solvent	Mass		
		1 mg	5 mg	10 mg
Preparing Stock Solutions	1 mM	4.0601 mL	20.3004 mL	40.6009 mL
	5 mM	0.8120 mL	4.0601 mL	8.1202 mL
	10 mM	0.4060 mL	2.0300 mL	4.0601 mL

Please refer to the solubility information to select the appropriate solvent.

### BIOLOGICAL ACTIVITY

#### Description

Boc-Lys-OH is a lysine derivative of azocyclic and anthraquinone. Boc-Lys-OH is a polypeptide-based heterofunctional linking molecule, which can be used as a biomarker reagent<sup>[1]</sup>.

### REFERENCES

[1]. Bodanszky M, et al. Synthesis of biocytin-containing peptides. J Am Chem Soc. 1977 Jan 5;99(1):235-9.

**Caution: Product has not been fully validated for medical applications. For research use only.**

Tel: 609-228-6898

Fax: 609-228-5909

E-mail: tech@MedChemExpress.com

Address: 1 Deer Park Dr, Suite Q, Monmouth Junction, NJ 08852, USA