



# SZABO SCANDIC

Part of Europa Biosite

## Produktinformation



Forschungsprodukte & Biochemikalien



Zellkultur & Verbrauchsmaterial



Diagnostik & molekulare Diagnostik



Laborgeräte & Service

Weitere Information auf den folgenden Seiten!  
See the following pages for more information!



### Lieferung & Zahlungsart

siehe unsere [Liefer- und Versandbedingungen](#)

### Zuschläge

- Mindermengenzuschlag
- Trockeneiszuschlag
- Gefahrgutzuschlag
- Expressversand

### SZABO-SCANDIC HandelsgmbH

Quellenstraße 110, A-1100 Wien

T. +43(0)1 489 3961-0

F. +43(0)1 489 3961-7

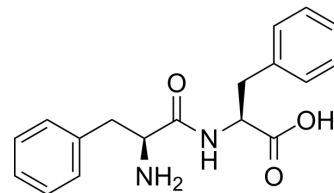
[mail@szabo-scandic.com](mailto:mail@szabo-scandic.com)

[www.szabo-scandic.com](http://www.szabo-scandic.com)

[linkedin.com/company/szaboscandic](https://www.linkedin.com/company/szaboscandic) 

## H-Phe-Phe-OH

<b>Cat. No.:</b>	HY-W007970		
<b>CAS No.:</b>	2577-40-4		
<b>Molecular Formula:</b>	C <sub>18</sub> H <sub>20</sub> N <sub>2</sub> O <sub>3</sub>		
<b>Molecular Weight:</b>	312.36		
<b>Target:</b>	Endogenous Metabolite		
<b>Pathway:</b>	Metabolic Enzyme/Protease		
<b>Storage:</b>	Powder	-20°C	3 years
		4°C	2 years
	In solvent	-80°C	6 months
		-20°C	1 month



### SOLVENT & SOLUBILITY

#### In Vitro

80% Acetic acid/water : 50 mg/mL (160.07 mM; Need ultrasonic)  
 DMSO : < 1 mg/mL (ultrasonic;warming;heat to 60°C) (insoluble or slightly soluble)  
 H<sub>2</sub>O : < 0.1 mg/mL (ultrasonic;warming;heat to 60°C) (insoluble)

	Solvent Concentration	Mass		
		1 mg	5 mg	10 mg
Preparing Stock Solutions	1 mM	3.2014 mL	16.0072 mL	32.0143 mL
	5 mM	0.6403 mL	3.2014 mL	6.4029 mL
	10 mM	0.3201 mL	1.6007 mL	3.2014 mL

Please refer to the solubility information to select the appropriate solvent.

### BIOLOGICAL ACTIVITY

#### Description

H-Phe-Phe-OH is a peptide made of two phenylalanine molecules; Phenylalanine is an essential amino acid and the precursor for the amino acid tyrosine.

#### IC<sub>50</sub> & Target

Human Endogenous Metabolite

#### In Vitro

H-Phe-Phe-OH (Phe-Phe) is a peptide made of two phenylalanine molecules. Phenylalanine is an essential amino acid and the precursor for the amino acid tyrosine. It is the precursor of catecholamines in the body. The psychotropic drugs also have phenylalanine as a constituent. The H-Phe-Phe-OH recognition motif of the Alzheimer's Abeta peptide is the smallest peptide able to assemble into higher-order structures<sup>[1]</sup>.

MCE has not independently confirmed the accuracy of these methods. They are for reference only.

### REFERENCES

**Caution: Product has not been fully validated for medical applications. For research use only.**

Tel: 609-228-6898

Fax: 609-228-5909

E-mail: [tech@MedChemExpress.com](mailto:tech@MedChemExpress.com)

Address: 1 Deer Park Dr, Suite Q, Monmouth Junction, NJ 08852, USA