



# SZABO SCANDIC

Part of Europa Biosite

## Produktinformation



Forschungsprodukte & Biochemikalien



Zellkultur & Verbrauchsmaterial



Diagnostik & molekulare Diagnostik



Laborgeräte & Service

Weitere Information auf den folgenden Seiten!  
See the following pages for more information!



### Lieferung & Zahlungsart

siehe unsere [Liefer- und Versandbedingungen](#)

### Zuschläge

- Mindermengenzuschlag
- Trockeneiszuschlag
- Gefahrgutzuschlag
- Expressversand

### SZABO-SCANDIC HandelsgmbH

Quellenstraße 110, A-1100 Wien

T. +43(0)1 489 3961-0

F. +43(0)1 489 3961-7

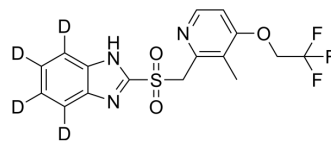
[mail@szabo-scandic.com](mailto:mail@szabo-scandic.com)

[www.szabo-scandic.com](http://www.szabo-scandic.com)

[linkedin.com/company/szaboscandic](https://www.linkedin.com/company/szaboscandic) 

## Lansoprazole sulfone-d<sub>4</sub>

Cat. No.:	HY-W008614S
CAS No.:	1184999-77-6
Molecular Formula:	C <sub>16</sub> H <sub>10</sub> D <sub>4</sub> F <sub>3</sub> N <sub>3</sub> O <sub>3</sub> S
Molecular Weight:	389.39
Target:	Isotope-Labeled Compounds; Proton Pump
Pathway:	Others; Membrane Transporter/Ion Channel
Storage:	Please store the product under the recommended conditions in the Certificate of Analysis.



### BIOLOGICAL ACTIVITY

#### Description

Lansoprazole sulfone-d<sub>4</sub> (AG-1813-d<sub>4</sub>) is the deuterium labeled Lansoprazole sulfone. Lansoprazole sulfone-d<sub>4</sub> is an orally active and selective inhibitor of H<sup>+</sup>, K<sup>+</sup>-ATPase. Lansoprazole sulfone-d<sub>4</sub> can significantly stimulates gastric acid secretion by inhibiting H<sup>+</sup>, K<sup>+</sup>-ATPase. Lansoprazole sulfone-d<sub>4</sub> has potential applications in duodenal ulcer, gastric ulcer, gastroesophageal reflux disease and Zollinger Ellison disease<sup>[1][2][3]</sup>.

### REFERENCES

- [1]. Russak EM, et al. Impact of Deuterium Substitution on the Pharmacokinetics of Pharmaceuticals. *Ann Pharmacother*. 2019 Feb;53(2):211-216.
- [2]. Swamy G, et al. Crystal structure of lansoprazole sulfone[J]. *Journal of Structural Chemistry*, 2007, 48: 715-718.
- [3]. Karol MD, et al. Lansoprazole pharmacokinetics in subjects with various degrees of kidney function. *Clin Pharmacol Ther*. 1997 Apr;61(4):450-8.

**Caution: Product has not been fully validated for medical applications. For research use only.**

Tel: 609-228-6898

Fax: 609-228-5909

E-mail: tech@MedChemExpress.com

Address: 1 Deer Park Dr, Suite Q, Monmouth Junction, NJ 08852, USA