



# SZABO SCANDIC

Part of Europa Biosite

## Produktinformation



Forschungsprodukte & Biochemikalien



Zellkultur & Verbrauchsmaterial



Diagnostik & molekulare Diagnostik



Laborgeräte & Service

Weitere Information auf den folgenden Seiten!  
See the following pages for more information!



### Lieferung & Zahlungsart

siehe unsere [Liefer- und Versandbedingungen](#)

### Zuschläge

- Mindermengenzuschlag
- Trockeneiszuschlag
- Gefahrgutzuschlag
- Expressversand

### SZABO-SCANDIC HandelsgmbH

Quellenstraße 110, A-1100 Wien

T. +43(0)1 489 3961-0

F. +43(0)1 489 3961-7

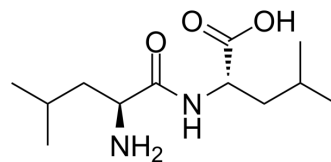
[mail@szabo-scandic.com](mailto:mail@szabo-scandic.com)

[www.szabo-scandic.com](http://www.szabo-scandic.com)

[linkedin.com/company/szaboscandic](https://www.linkedin.com/company/szaboscandic) 

## Leu-Leu-OH

Cat. No.:	HY-W008642
CAS No.:	3303-31-9
Molecular Formula:	C <sub>12</sub> H <sub>24</sub> N <sub>2</sub> O <sub>3</sub>
Molecular Weight:	244.33
Target:	Others
Pathway:	Others
Storage:	Sealed storage, away from moisture Powder    -80°C    2 years -20°C    1 year  * In solvent : -80°C, 6 months; -20°C, 1 month (sealed storage, away from moisture)



### SOLVENT & SOLUBILITY

In Vitro	DMSO : < 1 mg/mL (ultrasonic;warming;heat to 60°C) (insoluble or slightly soluble)
----------	--

### BIOLOGICAL ACTIVITY

Description	Leu-Leu-OH, a Leu derivative, is a dipeptide.
-------------	---

**Caution: Product has not been fully validated for medical applications. For research use only.**

Tel: 609-228-6898

Fax: 609-228-5909

E-mail: tech@MedChemExpress.com

Address: 1 Deer Park Dr, Suite Q, Monmouth Junction, NJ 08852, USA