



SZABO SCANDIC

Part of Europa Biosite

Produktinformation



Forschungsprodukte & Biochemikalien



Zellkultur & Verbrauchsmaterial



Diagnostik & molekulare Diagnostik



Laborgeräte & Service

Weitere Information auf den folgenden Seiten!
See the following pages for more information!



Lieferung & Zahlungsart

siehe unsere [Liefer- und Versandbedingungen](#)

Zuschläge

- Mindermengenzuschlag
- Trockeneiszuschlag
- Gefahrgutzuschlag
- Expressversand

SZABO-SCANDIC HandelsgmbH

Quellenstraße 110, A-1100 Wien

T. +43(0)1 489 3961-0

F. +43(0)1 489 3961-7

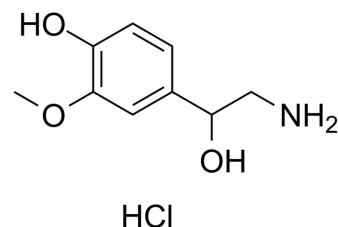
mail@szabo-scandic.com

www.szabo-scandic.com

[linkedin.com/company/szaboscandic](https://www.linkedin.com/company/szaboscandic) 

Normetanephrine hydrochloride

Cat. No.:	HY-W008794
CAS No.:	1011-74-1
Molecular Formula:	C ₉ H ₁₄ ClNO ₃
Molecular Weight:	219.67
Target:	Endogenous Metabolite
Pathway:	Metabolic Enzyme/Protease
Storage:	-20°C, sealed storage, away from moisture and light * In solvent : -80°C, 6 months; -20°C, 1 month (sealed storage, away from moisture and light)



SOLVENT & SOLUBILITY

In Vitro

H₂O : 100 mg/mL (455.23 mM; Need ultrasonic)
DMSO : 20.83 mg/mL (94.82 mM; Need ultrasonic)

	Solvent Concentration	Mass		
		1 mg	5 mg	10 mg
Preparing Stock Solutions	1 mM	4.5523 mL	22.7614 mL	45.5228 mL
	5 mM	0.9105 mL	4.5523 mL	9.1046 mL
	10 mM	0.4552 mL	2.2761 mL	4.5523 mL

Please refer to the solubility information to select the appropriate solvent.

In Vivo

- Add each solvent one by one: 10% DMSO >> 40% PEG300 >> 5% Tween-80 >> 45% saline
Solubility: ≥ 2.08 mg/mL (9.47 mM); Clear solution
- Add each solvent one by one: 10% DMSO >> 90% (20% SBE-β-CD in saline)
Solubility: ≥ 2.08 mg/mL (9.47 mM); Clear solution
- Add each solvent one by one: 10% DMSO >> 90% corn oil
Solubility: ≥ 2.08 mg/mL (9.47 mM); Clear solution

BIOLOGICAL ACTIVITY

Description

Normetanephrine ((±)-Normetanephrine) hydrochloride is the O-methylated metabolite of norepinephrine (NE)^[1].

In Vitro

Normetanephrine hydrochloride is a norepinephrine metabolite that contains one more methyl group than norepinephrine [2].
MCE has not independently confirmed the accuracy of these methods. They are for reference only.

Caution: Product has not been fully validated for medical applications. For research use only.

Tel: 609-228-6898

Fax: 609-228-5909

E-mail: tech@MedChemExpress.com

Address: 1 Deer Park Dr, Suite Q, Monmouth Junction, NJ 08852, USA