



SZABO SCANDIC

Part of Europa Biosite

Produktinformation



Forschungsprodukte & Biochemikalien



Zellkultur & Verbrauchsmaterial



Diagnostik & molekulare Diagnostik



Laborgeräte & Service

Weitere Information auf den folgenden Seiten!
See the following pages for more information!



Lieferung & Zahlungsart

siehe unsere [Liefer- und Versandbedingungen](#)

Zuschläge

- Mindermengenzuschlag
- Trockeneiszuschlag
- Gefahrgutzuschlag
- Expressversand

SZABO-SCANDIC HandelsgmbH

Quellenstraße 110, A-1100 Wien

T. +43(0)1 489 3961-0

F. +43(0)1 489 3961-7

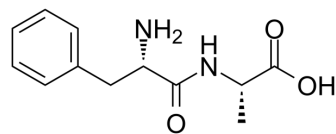
mail@szabo-scandic.com

www.szabo-scandic.com

[linkedin.com/company/szaboscandic](https://www.linkedin.com/company/szaboscandic) 

Phenylalanylalanine

| | |
|--------------------|--|
| Cat. No.: | HY-W009602 |
| CAS No.: | 3918-87-4 |
| Molecular Formula: | C ₁₂ H ₁₆ N ₂ O ₃ |
| Molecular Weight: | 236.27 |
| Target: | Others |
| Pathway: | Others |
| Storage: | 4°C, protect from light * In solvent : -80°C, 6 months; -20°C, 1 month (protect from light) |



SOLVENT & SOLUBILITY

In Vitro

H₂O : 100 mg/mL (423.24 mM; Need ultrasonic)
DMSO : 4.35 mg/mL (18.41 mM; ultrasonic and warming and heat to 60°C)

| Preparing Stock Solutions | Solvent Concentration | Mass | 1 mg | 5 mg | 10 mg |
|---------------------------|-----------------------|------|-----------|------------|------------|
| | | | | | |
| | 1 mM | | 4.2324 mL | 21.1622 mL | 42.3245 mL |
| | 5 mM | | 0.8465 mL | 4.2324 mL | 8.4649 mL |
| | 10 mM | | 0.4232 mL | 2.1162 mL | 4.2324 mL |

Please refer to the solubility information to select the appropriate solvent.

BIOLOGICAL ACTIVITY

Description

Phenylalanylalanine (H-Phe-Ala-OH) is a dipeptide composed of phenylalanine and alanine. Phenylalanylalanine is an incomplete breakdown product of protein digestion or protein catabolism^[1].

REFERENCES

[1]. Facchin G, et al. Experimental and theoretical studies of copper complexes with isomeric dipeptides as novel candidates against breast cancer. J Inorg Biochem. 2016;162:52-61.

Caution: Product has not been fully validated for medical applications. For research use only.

Tel: 609-228-6898

Fax: 609-228-5909

E-mail: tech@MedChemExpress.com

Address: 1 Deer Park Dr, Suite Q, Monmouth Junction, NJ 08852, USA