



# SZABO SCANDIC

Part of Europa Biosite

## Produktinformation



Forschungsprodukte & Biochemikalien



Zellkultur & Verbrauchsmaterial



Diagnostik & molekulare Diagnostik



Laborgeräte & Service

Weitere Information auf den folgenden Seiten!  
See the following pages for more information!



### Lieferung & Zahlungsart

siehe unsere [Liefer- und Versandbedingungen](#)

### Zuschläge

- Mindermengenzuschlag
- Trockeneiszuschlag
- Gefahrgutzuschlag
- Expressversand

### SZABO-SCANDIC HandelsgmbH

Quellenstraße 110, A-1100 Wien

T. +43(0)1 489 3961-0

F. +43(0)1 489 3961-7

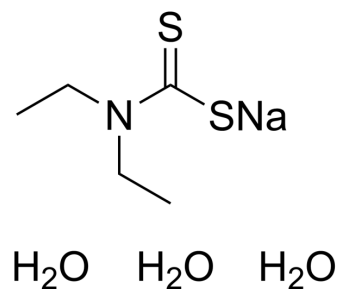
[mail@szabo-scandic.com](mailto:mail@szabo-scandic.com)

[www.szabo-scandic.com](http://www.szabo-scandic.com)

[linkedin.com/company/szaboscandic](https://www.linkedin.com/company/szaboscandic)

## Sodium diethylcarbamdithioate trihydrate

Cat. No.:	HY-W009722
CAS No.:	20624-25-3
Molecular Formula:	C <sub>5</sub> H <sub>16</sub> NNaO <sub>3</sub> S <sub>2</sub>
Molecular Weight:	225.31
Target:	Biochemical Assay Reagents
Pathway:	Others
Storage:	Store at room temperature



### BIOLOGICAL ACTIVITY

<b>Description</b>	Sodium diethylcarbamdithioate trihydrate is an organic compound commonly used as an accelerator in rubber processing. It can be used to accelerate the vulcanization reaction of natural rubber and synthetic rubber, and is widely used in rubber manufacturing. In addition, this compound can also be used as a reagent and catalyst in some organic synthesis reactions.
<b>In Vitro</b>	Sodium diethylcarbamdithioate trihydrate is a biochemical reagent that can be used as a biological material or organic compound for life science related research. MCE has not independently confirmed the accuracy of these methods. They are for reference only.

**Caution: Product has not been fully validated for medical applications. For research use only.**

Tel: 609-228-6898

Fax: 609-228-5909

E-mail: [tech@MedChemExpress.com](mailto:tech@MedChemExpress.com)

Address: 1 Deer Park Dr, Suite Q, Monmouth Junction, NJ 08852, USA