



SZABO SCANDIC

Part of Europa Biosite

Produktinformation



Forschungsprodukte & Biochemikalien



Zellkultur & Verbrauchsmaterial



Diagnostik & molekulare Diagnostik



Laborgeräte & Service

Weitere Information auf den folgenden Seiten!
See the following pages for more information!



Lieferung & Zahlungsart

siehe unsere [Liefer- und Versandbedingungen](#)

Zuschläge

- Mindermengenzuschlag
- Trockeneiszuschlag
- Gefahrgutzuschlag
- Expressversand

SZABO-SCANDIC HandelsgmbH

Quellenstraße 110, A-1100 Wien

T. +43(0)1 489 3961-0

F. +43(0)1 489 3961-7

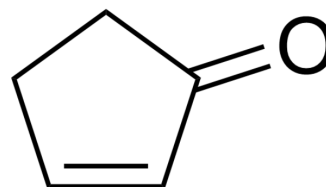
mail@szabo-scandic.com

www.szabo-scandic.com

[linkedin.com/company/szaboscandic](https://www.linkedin.com/company/szaboscandic) 

2-Cyclopentenone

| | | |
|---------------------------|---------------------------------|---------------------------------|
| Cat. No.: | HY-W010643 | |
| CAS No.: | 930-30-3 | |
| Molecular Formula: | C ₅ H ₆ O | |
| Molecular Weight: | 82.1 | |
| Target: | Biochemical Assay Reagents | |
| Pathway: | Others | |
| Storage: | Pure form | -20°C 3 years 4°C 2 years |
| | In solvent | -80°C 6 months -20°C 1 month |



SOLVENT & SOLUBILITY

In Vitro

DMSO : 100 mg/mL (1218.03 mM; Need ultrasonic)

| Preparing Stock Solutions | Solvent Concentration | Mass | | |
|---------------------------|-----------------------|------------|------------|-------------|
| | | 1 mg | 5 mg | 10 mg |
| | 1 mM | 12.1803 mL | 60.9013 mL | 121.8027 mL |
| | 5 mM | 2.4361 mL | 12.1803 mL | 24.3605 mL |
| | 10 mM | 1.2180 mL | 6.0901 mL | 12.1803 mL |

Please refer to the solubility information to select the appropriate solvent.

In Vivo

- Add each solvent one by one: 10% DMSO >> 40% PEG300 >> 5% Tween-80 >> 45% saline
Solubility: ≥ 2.5 mg/mL (30.45 mM); Clear solution
- Add each solvent one by one: 10% DMSO >> 90% (20% SBE-β-CD in saline)
Solubility: ≥ 2.5 mg/mL (30.45 mM); Clear solution
- Add each solvent one by one: 10% DMSO >> 90% corn oil
Solubility: ≥ 2.5 mg/mL (30.45 mM); Clear solution

BIOLOGICAL ACTIVITY

Description

Cyclopent-2-enone is a biochemical reagent that can be used as a biological material or organic compound for life science related research.

Caution: Product has not been fully validated for medical applications. For research use only.

Tel: 609-228-6898

Fax: 609-228-5909

E-mail: tech@MedChemExpress.com

Address: 1 Deer Park Dr, Suite Q, Monmouth Junction, NJ 08852, USA