



SZABO SCANDIC

Part of Europa Biosite

Produktinformation



Forschungsprodukte & Biochemikalien



Zellkultur & Verbrauchsmaterial



Diagnostik & molekulare Diagnostik



Laborgeräte & Service

Weitere Information auf den folgenden Seiten!
See the following pages for more information!



Lieferung & Zahlungsart

siehe unsere [Liefer- und Versandbedingungen](#)

Zuschläge

- Mindermengenzuschlag
- Trockeneiszuschlag
- Gefahrgutzuschlag
- Expressversand

SZABO-SCANDIC HandelsgmbH

Quellenstraße 110, A-1100 Wien

T. +43(0)1 489 3961-0

F. +43(0)1 489 3961-7

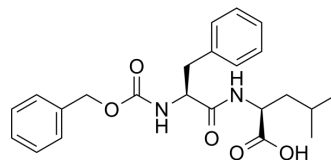
mail@szabo-scandic.com

www.szabo-scandic.com

[linkedin.com/company/szaboscandic](https://www.linkedin.com/company/szaboscandic) 

Z-Phe-Leu-OH

Cat. No.:	HY-W010955		
CAS No.:	4313-73-9		
Molecular Formula:	C ₂₃ H ₂₈ N ₂ O ₅		
Molecular Weight:	412.48		
Target:	Biochemical Assay Reagents		
Pathway:	Others		
Storage:	Powder	-20°C	3 years
		4°C	2 years
	In solvent	-80°C	6 months
		-20°C	1 month



BIOLOGICAL ACTIVITY

Description

Z-Phe-Leu-OH (NSC 334018) is a substrate for carboxypeptidase Y (CPY). Z-Phe-Leu-OH is incubated with recombinant CPY to determine peptidase activity^[1].

REFERENCES

[1]. Makino M, et, al. Carboxypeptidase Y activity and maintenance is modulated by a large helical structure. FEBS Open Bio. 2019 Jul;9(7):1337-1343.

Caution: Product has not been fully validated for medical applications. For research use only.

Tel: 609-228-6898

Fax: 609-228-5909

E-mail: tech@MedChemExpress.com

Address: 1 Deer Park Dr, Suite Q, Monmouth Junction, NJ 08852, USA