



SZABO SCANDIC

Part of Europa Biosite

Produktinformation



Forschungsprodukte & Biochemikalien



Zellkultur & Verbrauchsmaterial



Diagnostik & molekulare Diagnostik



Laborgeräte & Service

Weitere Information auf den folgenden Seiten!
See the following pages for more information!



Lieferung & Zahlungsart

siehe unsere [Liefer- und Versandbedingungen](#)

Zuschläge

- Mindermengenzuschlag
- Trockeneiszuschlag
- Gefahrgutzuschlag
- Expressversand

SZABO-SCANDIC HandelsgmbH

Quellenstraße 110, A-1100 Wien

T. +43(0)1 489 3961-0

F. +43(0)1 489 3961-7

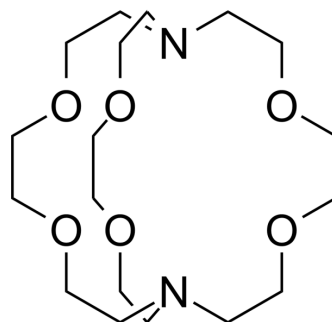
mail@szabo-scandic.com

www.szabo-scandic.com

[linkedin.com/company/szaboscandic](https://www.linkedin.com/company/szaboscandic) 

Cryptand 2.2.2

| | | | |
|--------------------|----------------------|-------|----------|
| Cat. No.: | HY-W011060 | | |
| CAS No.: | 23978-09-8 | | |
| Molecular Formula: | $C_{18}H_{36}N_2O_6$ | | |
| Molecular Weight: | 376.49 | | |
| Target: | Others | | |
| Pathway: | Others | | |
| Storage: | Powder | -20°C | 3 years |
| | | 4°C | 2 years |
| | In solvent | -80°C | 6 months |
| | | -20°C | 1 month |



BIOLOGICAL ACTIVITY

Description

Cryptand 2.2.2 is a metal ion chelator that can be used as a reducing agent and stabilizer to prepare nanoparticles. At room temperature, Cryptand 2.2.2 can serve as a host molecule, using the chelation effect to selectively bind desired ions (such as Zn^{2+} , Co^{2+} , Ni^{2+} , Cu^{2+})^{[1][2]}.

REFERENCES

- [1]. Lee KY, et al. One-step synthesis of gold nanoparticles using azacryptand and their applications in SERS and catalysis. *J Colloid Interface Sci.* 2007 Dec 15;316(2):476-81.
- [2]. Isaeva V A, et al. Quantum-Chemical Calculations and Stability Analysis of Copper (II) Complexes with Cryptand [2.2. 2][J]. *Russian Journal of Inorganic Chemistry*, 2021, 66: 1696-1702.

Caution: Product has not been fully validated for medical applications. For research use only.

Tel: 609-228-6898

Fax: 609-228-5909

E-mail: tech@MedChemExpress.com

Address: 1 Deer Park Dr, Suite Q, Monmouth Junction, NJ 08852, USA