



# SZABO SCANDIC

Part of Europa Biosite

## Produktinformation



Forschungsprodukte & Biochemikalien



Zellkultur & Verbrauchsmaterial



Diagnostik & molekulare Diagnostik



Laborgeräte & Service

Weitere Information auf den folgenden Seiten!  
See the following pages for more information!



### Lieferung & Zahlungsart

siehe unsere [Liefer- und Versandbedingungen](#)

### Zuschläge

- Mindermengenzuschlag
- Trockeneiszuschlag
- Gefahrgutzuschlag
- Expressversand

### SZABO-SCANDIC HandelsgmbH

Quellenstraße 110, A-1100 Wien

T. +43(0)1 489 3961-0

F. +43(0)1 489 3961-7

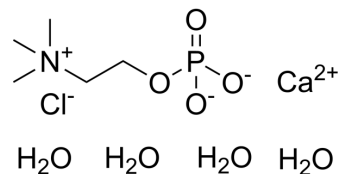
[mail@szabo-scandic.com](mailto:mail@szabo-scandic.com)

[www.szabo-scandic.com](http://www.szabo-scandic.com)

[linkedin.com/company/szaboscandic](https://www.linkedin.com/company/szaboscandic) 

## Phosphorylcholine chloride calcium salt tetrahydrate

Cat. No.:	HY-W011249
CAS No.:	72556-74-2
Molecular Formula:	C <sub>5</sub> H <sub>21</sub> CaClNO <sub>8</sub> P
Molecular Weight:	329.73
Target:	Endogenous Metabolite
Pathway:	Metabolic Enzyme/Protease
Storage:	Please store the product under the recommended conditions in the Certificate of Analysis.



### BIOLOGICAL ACTIVITY

Description	Phosphorylcholine chloride calcium salt tetrahydrate is an endogenous metabolite.	
IC <sub>50</sub> & Target	Human Endogenous Metabolite	Microbial Metabolite

### CUSTOMER VALIDATION

- Nat Commun. 2023 Mar 24;14(1):1631.
- NPJ Biofilms Microbiomes. 2023 Sep 4;9(1):62.
- JCI Insight. 2021 Sep 7;151911.
- J Physiol Biochem. 2022 Jan 20.

See more customer validations on [www.MedChemExpress.com](http://www.MedChemExpress.com)

**Caution: Product has not been fully validated for medical applications. For research use only.**

Tel: 609-228-6898

Fax: 609-228-5909

E-mail: [tech@MedChemExpress.com](mailto:tech@MedChemExpress.com)

Address: 1 Deer Park Dr, Suite Q, Monmouth Junction, NJ 08852, USA