



SZABO SCANDIC

Part of Europa Biosite

Produktinformation



Forschungsprodukte & Biochemikalien



Zellkultur & Verbrauchsmaterial



Diagnostik & molekulare Diagnostik



Laborgeräte & Service

Weitere Information auf den folgenden Seiten!
See the following pages for more information!



Lieferung & Zahlungsart

siehe unsere [Liefer- und Versandbedingungen](#)

Zuschläge

- Mindermengenzuschlag
- Trockeneiszuschlag
- Gefahrgutzuschlag
- Expressversand

SZABO-SCANDIC HandelsgmbH

Quellenstraße 110, A-1100 Wien

T. +43(0)1 489 3961-0

F. +43(0)1 489 3961-7

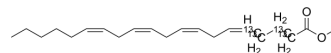
mail@szabo-scandic.com

www.szabo-scandic.com

[linkedin.com/company/szaboscandic](https://www.linkedin.com/company/szaboscandic) 

Methyl arachidonate- $^{13}\text{C}_4$

Cat. No.:	HY-W011297S2
CAS No.:	2692624-39-6
Molecular Formula:	$\text{C}_{17}^{13}\text{C}_4\text{H}_{34}\text{O}_2$
Molecular Weight:	322.46
Target:	Isotope-Labeled Compounds; Others
Pathway:	Others
Storage:	Please store the product under the recommended conditions in the Certificate of Analysis.



BIOLOGICAL ACTIVITY

Description

Methyl arachidonate- $^{13}\text{C}_4$ (Arachidonic acid methyl ester- $^{13}\text{C}_4$) is ^{13}C labeled Methyl arachidonate. Methyl arachidonate (Arachidonic acid methyl ester) is a fatty acid methyl ester resulting from the formal condensation of the carboxy group of arachidonic acid with methanol. Methyl arachidonate has activity of human blood serum metabolite^{[1][1][2]}.

REFERENCES

- [1]. Russak EM, et al. Impact of Deuterium Substitution on the Pharmacokinetics of Pharmaceuticals. *Ann Pharmacother.* 2019 Feb;53(2):211-216.
- [2]. White, Mary F, et al. The application of the polybromide yield in the estimation of methyl arachidonate in the methyl ester mixtures. *Journal of the American Oil Chemists' Society.* Volume: 26. Pages: 85-90. Journal.1949.

Caution: Product has not been fully validated for medical applications. For research use only.

Tel: 609-228-6898

Fax: 609-228-5909

E-mail: tech@MedChemExpress.com

Address: 1 Deer Park Dr, Suite Q, Monmouth Junction, NJ 08852, USA