



# SZABO SCANDIC

Part of Europa Biosite

## Produktinformation



Forschungsprodukte & Biochemikalien



Zellkultur & Verbrauchsmaterial



Diagnostik & molekulare Diagnostik



Laborgeräte & Service

Weitere Information auf den folgenden Seiten!  
See the following pages for more information!



### Lieferung & Zahlungsart

siehe unsere [Liefer- und Versandbedingungen](#)

### Zuschläge

- Mindermengenzuschlag
- Trockeneiszuschlag
- Gefahrgutzuschlag
- Expressversand

### SZABO-SCANDIC HandelsgmbH

Quellenstraße 110, A-1100 Wien

T. +43(0)1 489 3961-0

F. +43(0)1 489 3961-7

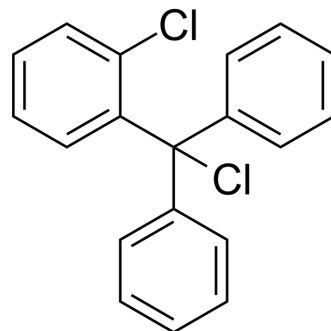
[mail@szabo-scandic.com](mailto:mail@szabo-scandic.com)

[www.szabo-scandic.com](http://www.szabo-scandic.com)

[linkedin.com/company/szaboscandic](https://www.linkedin.com/company/szaboscandic) 

## 2-Chlorotrityl chloride

Cat. No.:	HY-W011331		
CAS No.:	42074-68-0		
Molecular Formula:	C <sub>19</sub> H <sub>14</sub> Cl <sub>2</sub>		
Molecular Weight:	313.22		
Target:	Biochemical Assay Reagents		
Pathway:	Others		
Storage:	Powder	-20°C	3 years
		4°C	2 years
	In solvent	-80°C	6 months
		-20°C	1 month



### SOLVENT & SOLUBILITY

In Vitro	DMSO : 25 mg/mL (79.82 mM; Need ultrasonic)				
		Solvent Concentration	Mass 1 mg	5 mg	10 mg
	Preparing Stock Solutions	1 mM	3.1926 mL	15.9632 mL	31.9264 mL
		5 mM	0.6385 mL	3.1926 mL	6.3853 mL
10 mM		0.3193 mL	1.5963 mL	3.1926 mL	
Please refer to the solubility information to select the appropriate solvent.					
In Vivo	1. Add each solvent one by one: 10% DMSO >> 90% corn oil Solubility: ≥ 2.5 mg/mL (7.98 mM); Clear solution				

### BIOLOGICAL ACTIVITY

Description	(Chloro(2-chlorophenyl)methylene)dibenzene is a biochemical reagent that can be used as a biological material or organic compound for life science related research.
In Vitro	2 CTCs MCE has not independently confirmed the accuracy of these methods. They are for reference only.

**Caution: Product has not been fully validated for medical applications. For research use only.**

Tel: 609-228-6898

Fax: 609-228-5909

E-mail: tech@MedChemExpress.com

Address: 1 Deer Park Dr, Suite Q, Monmouth Junction, NJ 08852, USA