



# SZABO SCANDIC

Part of Europa Biosite

## Produktinformation



Forschungsprodukte & Biochemikalien



Zellkultur & Verbrauchsmaterial



Diagnostik & molekulare Diagnostik



Laborgeräte & Service

Weitere Information auf den folgenden Seiten!  
See the following pages for more information!



### Lieferung & Zahlungsart

siehe unsere [Liefer- und Versandbedingungen](#)

### Zuschläge

- Mindermengenzuschlag
- Trockeneiszuschlag
- Gefahrgutzuschlag
- Expressversand

### SZABO-SCANDIC HandelsgmbH

Quellenstraße 110, A-1100 Wien

T. +43(0)1 489 3961-0

F. +43(0)1 489 3961-7

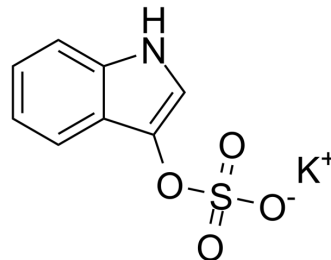
[mail@szabo-scandic.com](mailto:mail@szabo-scandic.com)

[www.szabo-scandic.com](http://www.szabo-scandic.com)

[linkedin.com/company/szaboscandic](https://www.linkedin.com/company/szaboscandic) 

## Potassium 1H-indol-3-yl sulfate

<b>Cat. No.:</b>	HY-W011910		
<b>CAS No.:</b>	2642-37-7		
<b>Molecular Formula:</b>	C <sub>8</sub> H <sub>6</sub> KNO <sub>4</sub> S		
<b>Molecular Weight:</b>	251.3		
<b>Target:</b>	Endogenous Metabolite		
<b>Pathway:</b>	Metabolic Enzyme/Protease		
<b>Storage:</b>	Powder	-20°C	3 years
	In solvent	-80°C	6 months
		-20°C	1 month



### SOLVENT & SOLUBILITY

#### In Vitro

DMSO : 100 mg/mL (397.93 mM; Need ultrasonic)  
 H<sub>2</sub>O : 50 mg/mL (198.97 mM; ultrasonic and warming and heat to 60°C)

	Solvent Concentration	Mass		
		1 mg	5 mg	10 mg
Preparing Stock Solutions	1 mM	3.9793 mL	19.8965 mL	39.7931 mL
	5 mM	0.7959 mL	3.9793 mL	7.9586 mL
	10 mM	0.3979 mL	1.9897 mL	3.9793 mL

Please refer to the solubility information to select the appropriate solvent.

#### In Vivo

- Add each solvent one by one: PBS  
Solubility: 25 mg/mL (99.48 mM); Clear solution; Need ultrasonic
- Add each solvent one by one: 10% DMSO >> 40% PEG300 >> 5% Tween-80 >> 45% saline  
Solubility: ≥ 2.5 mg/mL (9.95 mM); Clear solution
- Add each solvent one by one: 10% DMSO >> 90% (20% SBE-β-CD in saline)  
Solubility: ≥ 2.5 mg/mL (9.95 mM); Clear solution
- Add each solvent one by one: 10% DMSO >> 90% corn oil  
Solubility: ≥ 2.5 mg/mL (9.95 mM); Clear solution

### BIOLOGICAL ACTIVITY

#### Description

Potassium 1H-indol-3-yl sulfate is an endogenous metabolite.

---

**Caution: Product has not been fully validated for medical applications. For research use only.**

Tel: 609-228-6898

Fax: 609-228-5909

E-mail: [tech@MedChemExpress.com](mailto:tech@MedChemExpress.com)

Address: 1 Deer Park Dr, Suite Q, Monmouth Junction, NJ 08852, USA