



SZABO SCANDIC

Part of Europa Biosite

Produktinformation



Forschungsprodukte & Biochemikalien



Zellkultur & Verbrauchsmaterial



Diagnostik & molekulare Diagnostik



Laborgeräte & Service

Weitere Information auf den folgenden Seiten!
See the following pages for more information!



Lieferung & Zahlungsart

siehe unsere [Liefer- und Versandbedingungen](#)

Zuschläge

- Mindermengenzuschlag
- Trockeneiszuschlag
- Gefahrgutzuschlag
- Expressversand

SZABO-SCANDIC HandelsgmbH

Quellenstraße 110, A-1100 Wien

T. +43(0)1 489 3961-0

F. +43(0)1 489 3961-7

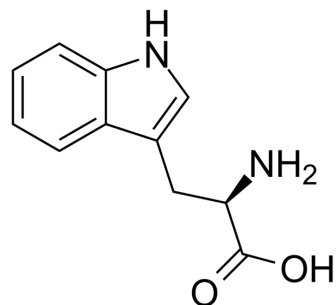
mail@szabo-scandic.com

www.szabo-scandic.com

[linkedin.com/company/szaboscandic](https://www.linkedin.com/company/szaboscandic) 

H-D-Trp-OH

Cat. No.:	HY-W012479
CAS No.:	153-94-6
Molecular Formula:	C ₁₁ H ₁₂ N ₂ O ₂
Molecular Weight:	204.23
Target:	Endogenous Metabolite
Pathway:	Metabolic Enzyme/Protease
Storage:	4°C, protect from light, stored under nitrogen * In solvent : -80°C, 6 months; -20°C, 1 month (protect from light, stored under nitrogen)



SOLVENT & SOLUBILITY

In Vitro	DMSO : 3.33 mg/mL (16.31 mM; ultrasonic and warming and heat to 60°C)				
		Solvent Concentration	Mass 1 mg	5 mg	10 mg
	Preparing Stock Solutions	1 mM	4.8964 mL	24.4822 mL	48.9644 mL
		5 mM	0.9793 mL	4.8964 mL	9.7929 mL
		10 mM	0.4896 mL	2.4482 mL	4.8964 mL
Please refer to the solubility information to select the appropriate solvent.					
In Vivo	<ol style="list-style-type: none"> Add each solvent one by one: 10% DMSO >> 40% PEG300 >> 5% Tween-80 >> 45% saline Solubility: ≥ 0.33 mg/mL (1.62 mM); Clear solution Add each solvent one by one: 10% DMSO >> 90% (20% SBE-β-CD in saline) Solubility: ≥ 0.33 mg/mL (1.62 mM); Clear solution Add each solvent one by one: 10% DMSO >> 90% corn oil Solubility: ≥ 0.33 mg/mL (1.62 mM); Clear solution 				

BIOLOGICAL ACTIVITY

Description	H-D-Trp-OH is a D-stereoisomer of tryptophan and occasionally found in naturally produced peptides such as the marine venom peptide.
IC₅₀ & Target	Human Endogenous Metabolite

Caution: Product has not been fully validated for medical applications. For research use only.

Tel: 609-228-6898

Fax: 609-228-5909

E-mail: tech@MedChemExpress.com

Address: 1 Deer Park Dr, Suite Q, Monmouth Junction, NJ 08852, USA