



# SZABO SCANDIC

Part of Europa Biosite

## Produktinformation



Forschungsprodukte & Biochemikalien



Zellkultur & Verbrauchsmaterial



Diagnostik & molekulare Diagnostik



Laborgeräte & Service

Weitere Information auf den folgenden Seiten!  
See the following pages for more information!



### Lieferung & Zahlungsart

siehe unsere [Liefer- und Versandbedingungen](#)

### Zuschläge

- Mindermengenzuschlag
- Trockeneiszuschlag
- Gefahrgutzuschlag
- Expressversand

### SZABO-SCANDIC HandelsgmbH

Quellenstraße 110, A-1100 Wien

T. +43(0)1 489 3961-0

F. +43(0)1 489 3961-7

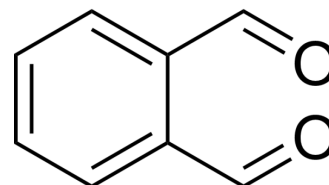
[mail@szabo-scandic.com](mailto:mail@szabo-scandic.com)

[www.szabo-scandic.com](http://www.szabo-scandic.com)

[linkedin.com/company/szaboscandic](https://www.linkedin.com/company/szaboscandic) 

## Phthalaldehyde

Cat. No.:	HY-W012669
CAS No.:	643-79-8
Molecular Formula:	C <sub>8</sub> H <sub>6</sub> O <sub>2</sub>
Molecular Weight:	134.13
Target:	Biochemical Assay Reagents
Pathway:	Others
Storage:	4°C, stored under nitrogen * In solvent : -80°C, 6 months; -20°C, 1 month (stored under nitrogen)



### SOLVENT & SOLUBILITY

#### In Vitro

DMSO : 200 mg/mL (1491.09 mM; Need ultrasonic)

Preparing Stock Solutions	Solvent Concentration	Mass		
		1 mg	5 mg	10 mg
	1 mM	7.4555 mL	37.2773 mL	74.5545 mL
	5 mM	1.4911 mL	7.4555 mL	14.9109 mL
	10 mM	0.7455 mL	3.7277 mL	7.4555 mL

Please refer to the solubility information to select the appropriate solvent.

### BIOLOGICAL ACTIVITY

#### Description

Phthalaldehyde is a biochemical assay reagent, which modifies the amino acid and measure the derivative through HPLC. Phthalaldehyde forms a fluorescent compound with  $\alpha$ -amino group<sup>[1][2]</sup>.

### REFERENCES

- [1]. Ikai K, et al., Prostaglandin D2 and prostaglandin D synthetase in mast cell deficient mice. Prostaglandins. 1984 Jun;27(6):877-85.
- [2]. Miyazawa S, et al., Complete nucleotide sequence of cDNA and predicted amino acid sequence of rat acyl-CoA oxidase. J Biol Chem. 1987 Jun 15;262(17):8131-7.

**Caution: Product has not been fully validated for medical applications. For research use only.**

Tel: 609-228-6898

Fax: 609-228-5909

E-mail: tech@MedChemExpress.com

Address: 1 Deer Park Dr, Suite Q, Monmouth Junction, NJ 08852, USA