



SZABO SCANDIC

Part of Europa Biosite

Produktinformation



Forschungsprodukte & Biochemikalien



Zellkultur & Verbrauchsmaterial



Diagnostik & molekulare Diagnostik



Laborgeräte & Service

Weitere Information auf den folgenden Seiten!
See the following pages for more information!



Lieferung & Zahlungsart

siehe unsere [Liefer- und Versandbedingungen](#)

Zuschläge

- Mindermengenzuschlag
- Trockeneiszuschlag
- Gefahrgutzuschlag
- Expressversand

SZABO-SCANDIC HandelsgmbH

Quellenstraße 110, A-1100 Wien

T. +43(0)1 489 3961-0

F. +43(0)1 489 3961-7

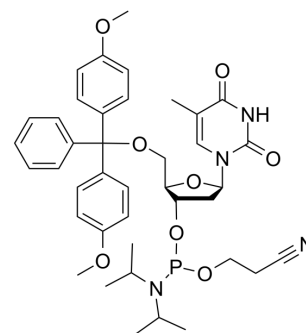
mail@szabo-scandic.com

www.szabo-scandic.com

[linkedin.com/company/szaboscandic](https://www.linkedin.com/company/szaboscandic) 

DMT-dT Phosphoramidite

Cat. No.:	HY-W013068
CAS No.:	98796-51-1
Molecular Formula:	C ₄₀ H ₄₉ N ₄ O ₈ P
Molecular Weight:	744.81
Target:	DNA/RNA Synthesis
Pathway:	Cell Cycle/DNA Damage
Storage:	-20°C, protect from light, stored under nitrogen * In solvent : -80°C, 6 months; -20°C, 1 month (protect from light, stored under nitrogen)



SOLVENT & SOLUBILITY

In Vitro

DMSO : 250 mg/mL (335.66 mM; Need ultrasonic)

Concentration	Solvent	Mass		
		1 mg	5 mg	10 mg
Preparing Stock Solutions	1 mM	1.3426 mL	6.7131 mL	13.4262 mL
	5 mM	0.2685 mL	1.3426 mL	2.6852 mL
	10 mM	0.1343 mL	0.6713 mL	1.3426 mL

Please refer to the solubility information to select the appropriate solvent.

In Vivo

- Add each solvent one by one: 10% DMSO >> 40% PEG300 >> 5% Tween-80 >> 45% saline
Solubility: 2.08 mg/mL (2.79 mM); Suspended solution; Need ultrasonic
- Add each solvent one by one: 10% DMSO >> 90% corn oil
Solubility: ≥ 2.08 mg/mL (2.79 mM); Clear solution

BIOLOGICAL ACTIVITY

Description

DMT-dT Phosphoramidite is typically used in the synthesis of DNA^[1].

REFERENCES

- [1]. James D Thorpe, et al. Mechanochemical Synthesis of Short DNA Fragments. Chemistry. 2020 Jul 22;26(41):8857-8861.

Caution: Product has not been fully validated for medical applications. For research use only.

Tel: 609-228-6898

Fax: 609-228-5909

E-mail: tech@MedChemExpress.com

Address: 1 Deer Park Dr, Suite Q, Monmouth Junction, NJ 08852, USA