



SZABO SCANDIC

Part of Europa Biosite

Produktinformation



Forschungsprodukte & Biochemikalien



Zellkultur & Verbrauchsmaterial



Diagnostik & molekulare Diagnostik



Laborgeräte & Service

Weitere Information auf den folgenden Seiten!
See the following pages for more information!



Lieferung & Zahlungsart

siehe unsere [Liefer- und Versandbedingungen](#)

Zuschläge

- Mindermengenzuschlag
- Trockeneiszuschlag
- Gefahrgutzuschlag
- Expressversand

SZABO-SCANDIC HandelsgmbH

Quellenstraße 110, A-1100 Wien

T. +43(0)1 489 3961-0

F. +43(0)1 489 3961-7

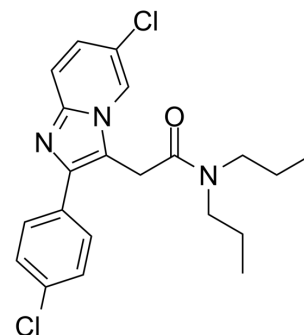
mail@szabo-scandic.com

www.szabo-scandic.com

[linkedin.com/company/szaboscandic](https://www.linkedin.com/company/szaboscandic) 

Alpidem

Cat. No.:	HY-W013150		
CAS No.:	82626-01-5		
Molecular Formula:	C ₂₁ H ₂₃ Cl ₂ N ₃ O		
Molecular Weight:	404.34		
Target:	GABA Receptor		
Pathway:	Membrane Transporter/Ion Channel; Neuronal Signaling		
Storage:	Powder	-20°C	3 years
		4°C	2 years
	In solvent	-80°C	6 months
		-20°C	1 month



SOLVENT & SOLUBILITY

In Vitro	DMSO : 25 mg/mL (61.83 mM; Need ultrasonic)			
		Solvent Concentration	Mass	
			1 mg	5 mg
			10 mg	
Preparing Stock Solutions	1 mM	2.4732 mL	12.3658 mL	24.7317 mL
	5 mM	0.4946 mL	2.4732 mL	4.9463 mL
	10 mM	0.2473 mL	1.2366 mL	2.4732 mL
Please refer to the solubility information to select the appropriate solvent.				
In Vivo	1. Add each solvent one by one: 10% DMSO >> 90% corn oil Solubility: ≥ 2.5 mg/mL (6.18 mM); Clear solution			

BIOLOGICAL ACTIVITY

Description	Alpidem selectively binds to $\alpha 1\beta 2\gamma 2$ subunit-containing GABA _A receptor with an IC ₅₀ of 17 nM and exerts anxiolytic effect ^[1] .
--------------------	--

REFERENCES

[1]. Faure-Halley C, et al. Expression and properties of recombinant alpha 1 beta 2 gamma 2 and alpha 5 beta 2 gamma 2 forms of the rat GABAA receptor. Eur J Pharmacol. 1993 Aug 15;246(3):283-7.

Caution: Product has not been fully validated for medical applications. For research use only.

Tel: 609-228-6898

Fax: 609-228-5909

E-mail: tech@MedChemExpress.com

Address: 1 Deer Park Dr, Suite Q, Monmouth Junction, NJ 08852, USA