



# SZABO SCANDIC

Part of Europa Biosite

## Produktinformation



Forschungsprodukte & Biochemikalien



Zellkultur & Verbrauchsmaterial



Diagnostik & molekulare Diagnostik



Laborgeräte & Service

Weitere Information auf den folgenden Seiten!  
See the following pages for more information!



### Lieferung & Zahlungsart

siehe unsere [Liefer- und Versandbedingungen](#)

### Zuschläge

- Mindermengenzuschlag
- Trockeneiszuschlag
- Gefahrgutzuschlag
- Expressversand

### SZABO-SCANDIC HandelsgmbH

Quellenstraße 110, A-1100 Wien

T. +43(0)1 489 3961-0

F. +43(0)1 489 3961-7

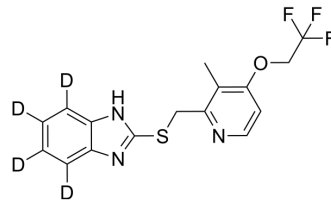
[mail@szabo-scandic.com](mailto:mail@szabo-scandic.com)

[www.szabo-scandic.com](http://www.szabo-scandic.com)

[linkedin.com/company/szaboscandic](https://www.linkedin.com/company/szaboscandic) 

## Lansoprazole sulfide-d<sub>4</sub>

<b>Cat. No.:</b>	HY-W013186S	
<b>CAS No.:</b>	1216682-38-0	
<b>Molecular Formula:</b>	C <sub>16</sub> H <sub>10</sub> D <sub>4</sub> F <sub>3</sub> N <sub>3</sub> OS	
<b>Molecular Weight:</b>	357.39	
<b>Target:</b>	Proton Pump; Bacterial	
<b>Pathway:</b>	Membrane Transporter/Ion Channel; Anti-infection	
<b>Storage:</b>	Powder	-20°C 3 years
	In solvent	-80°C 6 months
		-20°C 1 month



### BIOLOGICAL ACTIVITY

<b>Description</b>	Lansoprazole sulfide-d <sub>4</sub> is a deuterium labeled Lansoprazole Sulfide. Lansoprazole Sulfide is an active metabolite of the proton pump inhibitor Lansoprazole. Lansoprazole Sulfide is an orally active anti-TB (Mycobacterium tuberculosis) agent with IC <sub>50</sub> values of 0.59 μM intracellularly and 0.46 μM in broth <sup>[1]</sup> .
<b>IC<sub>50</sub> &amp; Target</b>	Proton pump <sup>[1]</sup> IC <sub>50</sub> : 0.59 μM (Mycobacterium tuberculosis intracellularly), 0.46 μM (Mycobacterium tuberculosis in broth) <sup>[1]</sup>

### REFERENCES

[1]. Mdanda S, et al. Lansoprazole-sulfide, pharmacokinetics of this promising anti-tuberculous agent. Biomed Chromatogr. 2017 Dec;31(12).

**Caution: Product has not been fully validated for medical applications. For research use only.**

Tel: 609-228-6898

Fax: 609-228-5909

E-mail: tech@MedChemExpress.com

Address: 1 Deer Park Dr, Suite Q, Monmouth Junction, NJ 08852, USA