



SZABO SCANDIC

Part of Europa Biosite

Produktinformation



Forschungsprodukte & Biochemikalien



Zellkultur & Verbrauchsmaterial



Diagnostik & molekulare Diagnostik



Laborgeräte & Service

Weitere Information auf den folgenden Seiten!
See the following pages for more information!



Lieferung & Zahlungsart

siehe unsere [Liefer- und Versandbedingungen](#)

Zuschläge

- Mindermengenzuschlag
- Trockeneiszuschlag
- Gefahrgutzuschlag
- Expressversand

SZABO-SCANDIC HandelsgmbH

Quellenstraße 110, A-1100 Wien

T. +43(0)1 489 3961-0

F. +43(0)1 489 3961-7

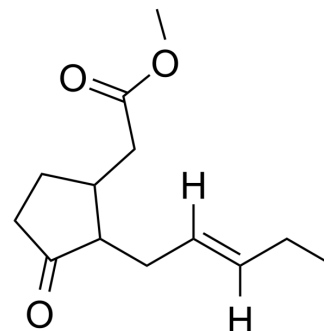
mail@szabo-scandic.com

www.szabo-scandic.com

[linkedin.com/company/szaboscandic](https://www.linkedin.com/company/szaboscandic) 

Methyl 2-(3-oxo-2-(pent-2-en-1-yl)cyclopentyl)acetate

Cat. No.:	HY-W013507	
CAS No.:	39924-52-2	
Molecular Formula:	C ₁₃ H ₂₀ O ₃	
Molecular Weight:	224.3	
Target:	Endogenous Metabolite	
Pathway:	Metabolic Enzyme/Protease	
Storage:	Pure form	-20°C 3 years 4°C 2 years
	In solvent	-80°C 6 months -20°C 1 month



SOLVENT & SOLUBILITY

In Vitro	DMSO : 100 mg/mL (445.83 mM; Need ultrasonic)				
		Solvent Concentration	Mass 1 mg	5 mg	10 mg
	Preparing Stock Solutions	1 mM	4.4583 mL	22.2916 mL	44.5831 mL
		5 mM	0.8917 mL	4.4583 mL	8.9166 mL
10 mM		0.4458 mL	2.2292 mL	4.4583 mL	
Please refer to the solubility information to select the appropriate solvent.					
In Vivo	<ol style="list-style-type: none"> Add each solvent one by one: 10% DMSO >> 40% PEG300 >> 5% Tween-80 >> 45% saline Solubility: ≥ 2.5 mg/mL (11.15 mM); Clear solution Add each solvent one by one: 10% DMSO >> 90% (20% SBE-β-CD in saline) Solubility: ≥ 2.5 mg/mL (11.15 mM); Clear solution Add each solvent one by one: 10% DMSO >> 90% corn oil Solubility: ≥ 2.5 mg/mL (11.15 mM); Clear solution 				

BIOLOGICAL ACTIVITY

Description	Methyl 2-(3-oxo-2-(pent-2-en-1-yl)cyclopentyl)acetate is an endogenous metabolite.
--------------------	--

Caution: Product has not been fully validated for medical applications. For research use only.

Tel: 609-228-6898

Fax: 609-228-5909

E-mail: tech@MedChemExpress.com

Address: 1 Deer Park Dr, Suite Q, Monmouth Junction, NJ 08852, USA