



# SZABO SCANDIC

Part of Europa Biosite

## Produktinformation



Forschungsprodukte & Biochemikalien



Zellkultur & Verbrauchsmaterial



Diagnostik & molekulare Diagnostik



Laborgeräte & Service

Weitere Information auf den folgenden Seiten!  
See the following pages for more information!



### Lieferung & Zahlungsart

siehe unsere [Liefer- und Versandbedingungen](#)

### Zuschläge

- Mindermengenzuschlag
- Trockeneiszuschlag
- Gefahrgutzuschlag
- Expressversand

### SZABO-SCANDIC HandelsgmbH

Quellenstraße 110, A-1100 Wien

T. +43(0)1 489 3961-0

F. +43(0)1 489 3961-7

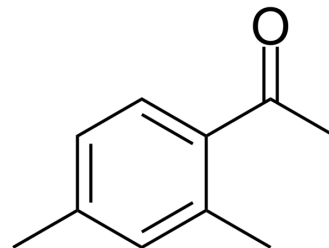
[mail@szabo-scandic.com](mailto:mail@szabo-scandic.com)

[www.szabo-scandic.com](http://www.szabo-scandic.com)

[linkedin.com/company/szaboscandic](https://www.linkedin.com/company/szaboscandic) 

## 2',4'-Dimethylacetophenone

Cat. No.:	HY-W015618	
CAS No.:	89-74-7	
Molecular Formula:	C <sub>10</sub> H <sub>12</sub> O	
Molecular Weight:	148.2	
Target:	Endogenous Metabolite	
Pathway:	Metabolic Enzyme/Protease	
Storage:	Pure form	-20°C 3 years
		4°C 2 years
	In solvent	-80°C 6 months
		-20°C 1 month



### SOLVENT & SOLUBILITY

In Vitro	DMSO : 100 mg/mL (674.76 mM; Need ultrasonic)			
		Solvent Concentration	Mass	
			1 mg	5 mg
			10 mg	
Preparing Stock Solutions	1 mM	6.7476 mL	33.7382 mL	67.4764 mL
	5 mM	1.3495 mL	6.7476 mL	13.4953 mL
	10 mM	0.6748 mL	3.3738 mL	6.7476 mL
Please refer to the solubility information to select the appropriate solvent.				
In Vivo	1. Add each solvent one by one: 10% DMSO >> 40% PEG300 >> 5% Tween-80 >> 45% saline Solubility: ≥ 2.5 mg/mL (16.87 mM); Clear solution			
	2. Add each solvent one by one: 10% DMSO >> 90% (20% SBE-β-CD in saline) Solubility: ≥ 2.5 mg/mL (16.87 mM); Clear solution			
	3. Add each solvent one by one: 10% DMSO >> 90% corn oil Solubility: ≥ 2.5 mg/mL (16.87 mM); Clear solution			

### BIOLOGICAL ACTIVITY

Description	2',4'-Dimethylacetophenone is an endogenous metabolite.
IC <sub>50</sub> & Target	Human Endogenous Metabolite

---

**Caution: Product has not been fully validated for medical applications. For research use only.**

Tel: 609-228-6898

Fax: 609-228-5909

E-mail: [tech@MedChemExpress.com](mailto:tech@MedChemExpress.com)

Address: 1 Deer Park Dr, Suite Q, Monmouth Junction, NJ 08852, USA