



# SZABO SCANDIC

Part of Europa Biosite

## Produktinformation



Forschungsprodukte & Biochemikalien



Zellkultur & Verbrauchsmaterial



Diagnostik & molekulare Diagnostik



Laborgeräte & Service

Weitere Information auf den folgenden Seiten!  
See the following pages for more information!



### Lieferung & Zahlungsart

siehe unsere [Liefer- und Versandbedingungen](#)

### Zuschläge

- Mindermengenzuschlag
- Trockeneiszuschlag
- Gefahrgutzuschlag
- Expressversand

### SZABO-SCANDIC HandelsgmbH

Quellenstraße 110, A-1100 Wien

T. +43(0)1 489 3961-0

F. +43(0)1 489 3961-7

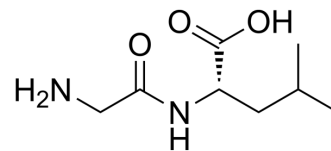
[mail@szabo-scandic.com](mailto:mail@szabo-scandic.com)

[www.szabo-scandic.com](http://www.szabo-scandic.com)

[linkedin.com/company/szaboscandic](https://www.linkedin.com/company/szaboscandic) 

## Glycyl-L-leucine

Cat. No.:	HY-W016077		
CAS No.:	869-19-2		
Molecular Formula:	C <sub>8</sub> H <sub>16</sub> N <sub>2</sub> O <sub>3</sub>		
Molecular Weight:	188.22		
Target:	Endogenous Metabolite		
Pathway:	Metabolic Enzyme/Protease		
Storage:	Powder	-20°C	3 years
		4°C	2 years
	In solvent	-80°C	6 months
		-20°C	1 month



### SOLVENT & SOLUBILITY

In Vitro	H <sub>2</sub> O : 25 mg/mL (132.82 mM; ultrasonic and warming and heat to 60°C)				
		Solvent Concentration	Mass 1 mg	5 mg	10 mg
	Preparing Stock Solutions	1 mM	5.3129 mL	26.5647 mL	53.1293 mL
		5 mM	1.0626 mL	5.3129 mL	10.6259 mL
10 mM		0.5313 mL	2.6565 mL	5.3129 mL	
Please refer to the solubility information to select the appropriate solvent.					
In Vivo	1. Add each solvent one by one: PBS Solubility: 50 mg/mL (265.65 mM); Clear solution; Need ultrasonic				

### BIOLOGICAL ACTIVITY

Description	Glycyl-L-leucine is a dipeptide that can be a common substrate for glycyl-leucine dipeptidase.
-------------	--

### REFERENCES

[1]. Ganapathy V, et al. Interaction of amino acids with glycl-L-leucine hydrolysis and transport in monkey small intestine. Clin Sci (Lond). 1979 Dec;57(6):521-7.

---

**Caution: Product has not been fully validated for medical applications. For research use only.**

Tel: 609-228-6898

Fax: 609-228-5909

E-mail: [tech@MedChemExpress.com](mailto:tech@MedChemExpress.com)

Address: 1 Deer Park Dr, Suite Q, Monmouth Junction, NJ 08852, USA