



SZABO SCANDIC

Part of Europa Biosite

Produktinformation



Forschungsprodukte & Biochemikalien



Zellkultur & Verbrauchsmaterial



Diagnostik & molekulare Diagnostik



Laborgeräte & Service

Weitere Information auf den folgenden Seiten!
See the following pages for more information!



Lieferung & Zahlungsart

siehe unsere [Liefer- und Versandbedingungen](#)

Zuschläge

- Mindermengenzuschlag
- Trockeneiszuschlag
- Gefahrgutzuschlag
- Expressversand

SZABO-SCANDIC HandelsgmbH

Quellenstraße 110, A-1100 Wien

T. +43(0)1 489 3961-0

F. +43(0)1 489 3961-7

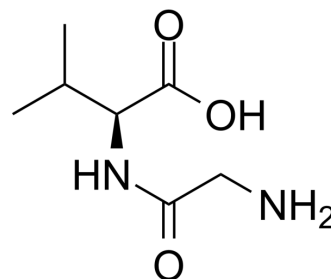
mail@szabo-scandic.com

www.szabo-scandic.com

[linkedin.com/company/szaboscandic](https://www.linkedin.com/company/szaboscandic) 

Glycyl-L-valine

Cat. No.:	HY-W016785		
CAS No.:	1963-21-9		
Molecular Formula:	C ₇ H ₁₄ N ₂ O ₃		
Molecular Weight:	174.2		
Target:	Endogenous Metabolite		
Pathway:	Metabolic Enzyme/Protease		
Storage:	Powder	-20°C	3 years
		4°C	2 years
	In solvent	-80°C	6 months
		-20°C	1 month



SOLVENT & SOLUBILITY

In Vitro

H₂O : 100 mg/mL (574.05 mM; Need ultrasonic)
 DMSO : < 1 mg/mL (ultrasonic;warming;heat to 60°C) (insoluble or slightly soluble)

Preparing Stock Solutions	Solvent Concentration	Mass		
		1 mg	5 mg	10 mg
	1 mM	5.7405 mL	28.7026 mL	57.4053 mL
	5 mM	1.1481 mL	5.7405 mL	11.4811 mL
	10 mM	0.5741 mL	2.8703 mL	5.7405 mL

Please refer to the solubility information to select the appropriate solvent.

In Vivo

1. Add each solvent one by one: PBS
 Solubility: 100 mg/mL (574.05 mM); Clear solution; Need ultrasonic

BIOLOGICAL ACTIVITY

Description

Glycyl-L-valine is a dipeptide that contains glycine and valine.

IC₅₀ & Target

Human Endogenous Metabolite

REFERENCES

[1]. Usha C, et al. Growth and combined experimental and quantum chemical study of glycyl-L-Valine crystal. Heliyon. 2019 May 4;5(5):e01574.

Caution: Product has not been fully validated for medical applications. For research use only.

Tel: 609-228-6898

Fax: 609-228-5909

E-mail: tech@MedChemExpress.com

Address: 1 Deer Park Dr, Suite Q, Monmouth Junction, NJ 08852, USA