



# SZABO SCANDIC

Part of Europa Biosite

## Produktinformation



Forschungsprodukte & Biochemikalien



Zellkultur & Verbrauchsmaterial



Diagnostik & molekulare Diagnostik



Laborgeräte & Service

Weitere Information auf den folgenden Seiten!  
See the following pages for more information!



### Lieferung & Zahlungsart

siehe unsere [Liefer- und Versandbedingungen](#)

### Zuschläge

- Mindermengenzuschlag
- Trockeneiszuschlag
- Gefahrgutzuschlag
- Expressversand

### SZABO-SCANDIC HandelsgmbH

Quellenstraße 110, A-1100 Wien

T. +43(0)1 489 3961-0

F. +43(0)1 489 3961-7

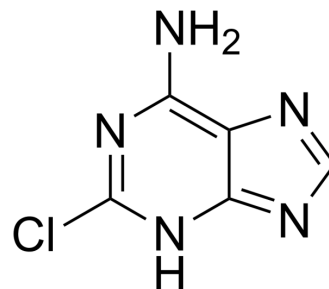
[mail@szabo-scandic.com](mailto:mail@szabo-scandic.com)

[www.szabo-scandic.com](http://www.szabo-scandic.com)

[linkedin.com/company/szaboscandic](https://www.linkedin.com/company/szaboscandic) 

## 2-Chloroadenine

Cat. No.:	HY-W016999		
CAS No.:	1839-18-5		
Molecular Formula:	C <sub>5</sub> H <sub>4</sub> ClN <sub>5</sub>		
Molecular Weight:	169.57		
Target:	Biochemical Assay Reagents		
Pathway:	Others		
Storage:	Powder	-20°C	3 years
	In solvent	-80°C	6 months
		-20°C	1 month



### BIOLOGICAL ACTIVITY

#### Description

2-Chloroadenine (6-Amino-2-chloropurine) is a biochemical reagent that can be used as a biological material or organic compound for life science related research.

#### In Vitro

2-Chloroadenine is a heterocyclic building block that has been used in the synthesis of adenosine antimetabolites with antineoplastic activity. It is also the major catabolite of 2-chloro-2'-deoxyadenosine. MCE has not independently confirmed the accuracy of these methods. They are for reference only.

### REFERENCES

- [1]. Bauta, WE, Schulmeier, BE, Bur the , BJ, et al. A new process for antineoplastic agent clofarabine. *Org. Proc. Res. Dev.* 8(6):889-896(2004)
- [2]. Bontemps, F., Delacauw, A., Cardoen, S., et al. Metabolism and cytotoxic effects of 2-chloroadenine, the major catabolite of 2-chloro-2'-deoxyadenosine. *Biochem. Pharmacol.* 59(10):1237-1243(2000)

**Caution: Product has not been fully validated for medical applications. For research use only.**

Tel: 609-228-6898

Fax: 609-228-5909

E-mail: tech@MedChemExpress.com

Address: 1 Deer Park Dr, Suite Q, Monmouth Junction, NJ 08852, USA