



# SZABO SCANDIC

Part of Europa Biosite

## Produktinformation



Forschungsprodukte & Biochemikalien



Zellkultur & Verbrauchsmaterial



Diagnostik & molekulare Diagnostik



Laborgeräte & Service

Weitere Information auf den folgenden Seiten!  
See the following pages for more information!



### Lieferung & Zahlungsart

siehe unsere [Liefer- und Versandbedingungen](#)

### Zuschläge

- Mindermengenzuschlag
- Trockeneiszuschlag
- Gefahrgutzuschlag
- Expressversand

### SZABO-SCANDIC HandelsgmbH

Quellenstraße 110, A-1100 Wien

T. +43(0)1 489 3961-0

F. +43(0)1 489 3961-7

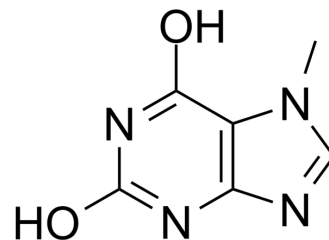
[mail@szabo-scandic.com](mailto:mail@szabo-scandic.com)

[www.szabo-scandic.com](http://www.szabo-scandic.com)

[linkedin.com/company/szaboscandic](https://www.linkedin.com/company/szaboscandic) 

## 7-Methylxanthine

<b>Cat. No.:</b>	HY-W017163	
<b>CAS No.:</b>	552-62-5	
<b>Molecular Formula:</b>	C <sub>6</sub> H <sub>6</sub> N <sub>4</sub> O <sub>2</sub>	
<b>Molecular Weight:</b>	166.14	
<b>Target:</b>	Endogenous Metabolite	
<b>Pathway:</b>	Metabolic Enzyme/Protease	
<b>Storage:</b>	Powder	-20°C 3 years 4°C 2 years
	In solvent	-80°C 2 years -20°C 1 year



### SOLVENT & SOLUBILITY

#### In Vitro

DMSO : 4 mg/mL (24.08 mM; ultrasonic and warming and heat to 60°C)  
 H<sub>2</sub>O : < 0.1 mg/mL (ultrasonic;warming;heat to 60°C) (insoluble)

Preparing Stock Solutions	Solvent Concentration	Mass		
		1 mg	5 mg	10 mg
	1 mM	6.0190 mL	30.0951 mL	60.1902 mL
	5 mM	1.2038 mL	6.0190 mL	12.0380 mL
	10 mM	0.6019 mL	3.0095 mL	6.0190 mL

Please refer to the solubility information to select the appropriate solvent.

#### In Vivo

1. Add each solvent one by one: 50% PEG300 >> 50% saline  
 Solubility: 8.33 mg/mL (50.14 mM); Suspended solution; Need ultrasonic

### BIOLOGICAL ACTIVITY

#### Description

7-Methylxanthine, a methyl derivative of xanthine, is one of the purine components in urinary calculi.

#### IC<sub>50</sub> & Target

Human Endogenous Metabolite

### REFERENCES

[1]. Caubet MS, et al. Determination of urinary 13C-caffeine metabolites by liquid chromatography-mass spectrometry: the use of metabolic ratios to assess CYP1A2 activity. J Pharm Biomed Anal. 2004 Feb 4;34(2):379-89.

---

**Caution: Product has not been fully validated for medical applications. For research use only.**

Tel: 609-228-6898

Fax: 609-228-5909

E-mail: [tech@MedChemExpress.com](mailto:tech@MedChemExpress.com)

Address: 1 Deer Park Dr, Suite Q, Monmouth Junction, NJ 08852, USA